

We are pleased to extend our congratulations to KAFSC, its board members and officers, and all those who have been a part of this wonderful organization, for their 23 years of service to the community.

From all of us at Lee Anav Chung LLP.

NEW YORK
LOS ANGELES
SEATTLE
MEXICO CITY

LEE ANAV
CHUNG^{LLP}
ATTORNEYS

www.leeanavchung.com

Commercial Litigation • Banking and Financial Services • Real Estate
Intellectual Property • Labor and Employment



Korean American Family Service Center 23rd Annual Benefit Gala

RAISING
HOPE
TRANSFORMING
LIVES

23RD KOREAN AMERICAN
FAMILY SERVICE CENTER
ANNUAL
BENEFIT GALA
FRIDAY, MAY 11, 2012 | GRAND HYATT, NEW YORK

WWW.KAFSC.ORG

CONTENTS

Board Chair and Executive Director's Welcome

Gala Co-Chairs' Welcome

Program

Biographies

**Journey of Hope:
The Story of KAFSC**

From its origins as a grassroots support group to the nationally recognized and funded operation it is today, the Korean American Family Service Center (KAFSC) has evolved to become a leading nonprofit organization that empowers adults and youth to lead safe and healthy lives.

Finding Hope: A Client's Story

KAFSC client courageously shares her story of living with domestic violence and how KAFSC changed her life forever.

Volunteer Spotlights

An essential part of the Center is the group of dedicated volunteers, two of whom share their stories.

- Jung Martha Hong
- Min C. Chang, Esq.

**Vision of Hope and Transformation:
Po Kim, John Pai and Wonsook Kim**

The Center is honored to have among its supporters three prominent Korean contemporary artists: Po Kim, John Pai and Wonsook Kim. We were fortunate to spend time with each of them and learn from their insight about art, what inspires them to keep going and why they help others. KAFSC is privileged to feature their works throughout this Journal.

FINANCIAL REPORT

Program Highlights

Statistics

Financial Statement

OUR SUPPORTERS

23rd Annual Benefit Gala Supporters

Donors

Funders

Board of Directors

Gala Benefit Committee

Staff

Volunteers



Cover Art Po Kim

Po Kim's pieces are featured throughout the journal. See page 35 for his interview.

Flying Birds and Fish, 2006,
Collage and Acrylic on Canvas,
72 x 60 inches

Editor In Chief
Rosa Chang

Publisher
Yung Moon

Editor
Shelley Kehm

Creative Director
Daisy Kim

Production Director
Gina Kang

Senior Designer
Eunman Kim

Editorial Advisors
Susan Kim Tsui
Tung Lee

Writers/Interviewers
Michelle Chu
Shelley Kehm
Sarah BJ Sung
Jeehae Lee
Hee Ok Kim
Hellen Kim

Photography
Erin Lee of
erinandcamera.com
Shao Han Lee

Advertising
Joe Avdek
Katie Berger
Min Um-Mandhyan



SELF

congratulates the Korean American Family Service Center
for 23 years of service to the Korean American community

KAFSC is grateful for the on going support of our elected officials.

Visit www.kafsc.org/gala2012 to read greeting letters from elected officials, including:

Congressman Gary Ackerman

State Assemblywoman Grace Meng

Mayor Michael Bloomberg

Comptroller John Liu

NYU Council Member Margaret Chin

Brooklyn Borough President Marty Markowitz

Public Advocate Bill de Blasio



*Congratulations to
the Korean American Family
Service Center for 23 years of
empowering families to lead
their lives with dignity!*

*Myung Shin Lee & Wha Sup Chung
Mina, Guy and Kenny*



*Misook and Harry Doolittle are
proud to support the
Korean American Family
Service Center and
its outstanding contributions to
the community.*

Misook and Harry Doolittle

AMORE PACIFIC

TIME RESPONSE Skin Renewal Creme

Advanced Gene Science
Unprecedented Age-reversing Results

RECHARGE skin's genetic activity
RESTORE a bright & radiant complexion
REVEAL smooth, supple & youthful skin

In-vitro study showed:
Skin cell regeneration doubled after only 4 days

Clinicals showed:
97% reported more youthful-looking skin
91% reported firmer skin
85% reported fewer lines and wrinkles
(after 4 weeks of use)

For more information, please visit
the AMOREPACIFIC Beauty Gallery & Spa:

114 Spring Street, SoHo NY 10012
212 966 0400 or 877 55 AMORE
us.amorepacific.com



PHOTOGRAPHY BY ERIN LEE OF ERINANDCAMERA.COM

WELCOME



Dear KAFSC Community,

On behalf of everyone at the Korean American Family Service Center (KAFSC), we welcome you to our 2012 Annual Benefit Gala Journal & Annual Report. Last year was a year of transformation and hope, and this Journal features our core work and the great impact we have made together. Inside is a powerful yet heartwarming client story of Ms. Sarah Park that shows us how her life was changed. Her story truly demonstrates our core mission and the vital assistance we provide. Her determination and resolve to rebuild her life is just one example of the countless families we serve and support on a daily basis.

In 2011, we concentrated on our community outreach and education efforts. Consequently, we launched a new community-wide campaign in partnership with three major Korean restaurants to reach over 75,000 people. We produced and distributed placemats for the restaurants with our 24-hour, bilingual hotline number and other resources. Throughout the year, we marched, participated in, and spoke at numerous rallies, conferences and festivals. We also continued to build strategic relationships with churches and religious leaders by successfully hosting workshops and a bazaar.

While we look forward to the day when domestic violence no longer exists, this is a time to re-affirm our life-long commitment to this noble cause. As a community, we cannot afford to turn away and become complicit participants. Our supporters have been key ambassadors and advocates for KAFSC. The Annual Benefit Gala is a major source of funding, constituting 30% of our annual operating budget. We must work together to continue to embrace the abused, neglected and unaddressed, and help them live with the dignity, mutual respect and compassion that we all deserve.

We could not do what we do without you and your generous support and steadfast commitment over the years. We are grateful for your contribution and presence tonight.

Thank you and enjoy the festivities!

Yours truly,

Sarah BJ Sung
CHAIR, BOARD OF DIRECTORS

Grace Jungsook Yoon
EXECUTIVE DIRECTOR



o c c a s i o n 9
WEDDINGS & EVENTS

“Congratulation to KAFSC on
its 23rd Anniversary”

- Wedding & Event Decoration ■ Wedding & Event planning & Coordinating ■
- Private & Corporate Events ■ Invitations & Stationary ■



WWW.OCCASION9.COM 646.321.7344 INFO@OCCASION9.COM OCCASION9-09.BLOGSPOT.COM

PHOTOGRAPHY BY ERIN LEE OF ERINANDCAMERA.COM

WELCOME



Dear Friends and Supporters,

We are thrilled to celebrate the 23rd Annual Benefit Gala for the Korean American Family Service Center (KAFSC). As Gala Co-Chairs, it has been a truly rewarding and heartwarming experience to witness the incredible generosity and support that our community has shown to bring this evening together.

From our munificent Honorary Chair Misook Doolittle, to the unwavering support of our Vision in Action Honorees Circle of Friends, to our energetic and talented Hodori After School Program children performers, to our wonderful keynote speaker Amy Chua, Yale Law professor and author of the bestselling memoir, *Battle Hymn of the Tiger Mother*, this evening will truly exemplify how we as an organization and a community can truly raise hope and transform lives.

While it has been a privilege and honor to serve on the Gala Committee, it is all of you who have joined us at this Gala that have made it all possible.

The fundraising that we accomplish here this evening will help KAFSC to accept more children and youth into our after-school programs than ever before. You make it possible for women and teens in crisis to find hope. You make it possible for each and every one of our clients to transform their lives for a better and brighter future through services, such as our Transitional Housing Program.

We encourage everyone to bid generously on our many exciting silent and live auction items. We thank you for your generous support today, tomorrow and beyond.

Warmest regards,

Yung Moon
GALA CO-CHAIR

Paul Yoon
GALA CO-CHAIR

Lasting vitality with delicate ginseng seed oil Sulwhasoo Concentrated Ginseng Renewing Essential Oil

Defy the elements of time with the pure essence of ginseng oil. A mere 0.004ml delicately captured from each ginseng seed fortifies skin cells and restores visible natural radiance. Sulwhasoo Concentrated Ginseng Renewing Essential Oil is your answer to replenished and glowing true beauty.

Sulwhasoo



Visit the Sulwhasoo boutique at Bergdorf Goodman Beauty Level .
For more information, contact 212 872 8726.

© March 2012 AMOREPACIFIC US, INC.

PROGRAM

Welcome

Yung Moon and Paul Yoon, Gala Co-Chairs
Mistress of Ceremonies, Vivian Lee, NY1 News

Executive Director and Board Chair Greetings

Grace Jungsook Yoon, Executive Director
Sarah BJ Sung, Chair, Board of Directors

Vision in Action Award

Circle of Friends
A group of Korean American Women who have passionately supported KAFSC's mission for the past 15 years

2012 KAFSC Video

Special Performance

Hodori Samulnori
We are proud to have the students from
Hodori Program's Samulnori class perform at tonight's gala

Dinner

Live Auction

Elizabeth Cho & Kyun Yi

Keynote Speaker

Amy Chua
Author of *Battle Hymn of the Tiger Mother* and
the John M. Duff Professor of Law at Yale Law School

Raise Your Hand Donation and Raffle Drawing

Silent Auction Winners Announced Closing



GALA HONORARY CHAIR

Misook Doolittle

Born in Seoul, South Korea, Misook Doolittle is a graduate of the University of Southern Indiana. Misook is married to Harry C. Doolittle, artist, author and former advertising agency creative director. They reside in Scarsdale, New York.

Misook is the founder of the Exclusively Misook brand, which specializes in women's couture, and is now owned by the HMX Corporation of New York. Misook started her career in fashion in Detroit in 1981, where she taught herself to knit and created her unique knit sweaters. She soon took her samples to the Kenneth Boutique in New York City, which purchased all of them and her sweaters and gave her the first orders for the Exclusively Misook line. Thus, the brand was launched.

The Exclusively Misook line is the only washable knitwear in its competitive price point, which includes brands such as Dana Bachman, Eileen Fisher, Ellen Tracy and St. John. No other knitwear can simply be tossed into a washing machine for easy ready-to-wear and care.

While Misook Doolittle no longer works on the brand, Exclusively Misook continues to flourish and is featured in department stores and boutiques across the country. There is nothing quite like a "Misook," and we don't mean just the brand.



Yung Moon

GALA CO-CHAIR

Ms. Moon is the Associate Publisher of Marketing and Creative Services for SELF Magazine. As a key member of the brand's executive management team, she oversees a comprehensive roster of marketing and advertising programs, including the signature SELF Workout in the Park tour, Women Doing Good initiative, brand-licensing projects and the soon-to-be launched SELF Workout in the Park social game. In 2007, Ms. Moon received the prestigious Integrated Marketer of the Year award from Media Industry Newsletter. Ms. Moon has been a supporter of the Korean American Family Service Center (KAFSC) for over 10 years and has served on the Board of Directors from 1999-2001 and 2010-present. She has been volunteering her time to nonprofit charities since 1992, when she spearheaded a Korean-American voter registration organization. Ms. Moon earned a M.F.A. from the School of the Art Institute of Chicago and a B.A. with Honors from Williams College.

GALA CO-CHAIR

Paul Yoon

Mr. Yoon is Counsel to the Jeon Law Group, a general-practice law firm headquartered in Fort Lee, New Jersey. From 2007 to 2011, he served as Assistant Prosecutor in Essex County where he prosecuted felony crimes committed against the State of New Jersey. Mr. Yoon also has clerked for the Honorable Joseph P. Donohue in Union County and served as Special Assistant to Washington D.C. Mayor, Anthony A. Williams. Mr. Yoon is a recipient of the Woodrow Wilson Fellowship and is very active in the Asian American community. He serves as President-Elect of the Asian Pacific American Lawyers Association (APALA) of New Jersey. He also serves on the Board of Directors for the Korean American Family Service Center (KAFSC) and the Korean American League for Civic Action (KALCA). Mr. Yoon received his J.D. from New York Law School and his B.A. from the University of Pennsylvania.



Vivian Lee

MISTRESS OF CEREMONIES

Vivian Lee is an anchor and reporter at NY1. Ms. Lee has covered stories ranging from the Occupy Wall Street movement to a foiled Russian plot to sell weapons to rebels around the world through New York City. In February 2012, she reported from Vatican City on the elevation of New York's Archbishop Timothy Dolan to cardinal. Formerly, Ms. Lee worked at NBC New York as a general assignment reporter. Before her stint at WNBC, Ms. Lee was the Parliamentary Correspondent for Citytv of the CHUM Network in Canada, as well as a general assignment reporter and fill-in anchor for CityPulse News in Toronto. Among her accolades, Ms. Lee was awarded Anchor-Reporter of the Year for 2012 by the Tri-State Law Enforcement Foundation. She also received the Asian American Business Development Center's award for Outstanding Community Service in 2011, the award of Role Model of 2011 from CUNY, and was honored with the Asian Professional Extension's (APEX) Volunteer Award in 2008 for tutoring fourth graders at Manhattan's PS 1.



VISION IN ACTION AWARD

Circle of Friends

This year, KAFSC is honoring Circle of Friends, a group of dedicated Korean American women who have passionately supported KAFSC's mission for the past 15 years. Through this Vision in Action award, the Center recognizes those whose efforts motivate and encourage the rest of us.

Helmed by Myung Shin Lee, co-founder of Circle of Friends and a KAFSC Board of Directors member, this unwavering group of women formed their group at KAFSC to find ways to assist those in need. As they worked together and culled their resources, their commitment blossomed into life-long friendships and much more. The results of Circle of Friends' acts and accomplishments directly and indirectly impacted countless women and their children.

In April 2012, Ms. Lee received the Volunteers in Service for Asian American Community (VISAC) Award by CMP and the Ong Family Foundation for her nearly twenty years of dedicated community service and volunteerism. The Circle of Friends' spirit of sharing and volunteerism has inspired all of us at KAFSC.

PHOTOGRAPHY COURTESY OF AMY CHUA



KEYNOTE SPEAKER

Amy Chua

Amy Chua is the John M. Duff Professor of Law at Yale University. She teaches in the areas of contracts, law and development, international business transactions, and law and globalization.

Professor Chua was the 2011 recipient of Yale Law School's "Best Teaching" award, as well as being recently named one of *Time* magazine's 100 most influential people, one of the *Atlantic Monthly's* Brave Thinkers, and one of Foreign Policy's Global Thinkers for 2011.

Professor Chua's first book, *World on Fire: How Exporting Free Market Democracy Breeds Ethnic Hatred and Global Instability*, was a *New York Times* bestseller and selected by both *The Economist* and the U.K.'s *Guardian* as one of Best Book of 2003. Professor Chua's second book, *Day of Empire: How Hyperpowers Rise to Global Dominance - and Why They Fall*, was a critically acclaimed Foreign Affairs bestseller. Her latest book, *Battle Hymn of the Tiger Mother*, is a memoir. It was a runaway *New York Times* bestseller as well as a bestseller in China, Germany, Israel, Korea, Poland, Taiwan and the U.K. The book has been translated into 30 languages.

She has addressed numerous government and policymaking institutions including the World Bank, the Brookings Institution, and the CIA. In 2011, she gave a plenary lecture in South Korea at the World Knowledge Forum and met with Korea's Minister of Education. Also in 2011, she was invited to attend the World Economic Forum in Davos, where she co-led a session with former Harvard President Larry Summers.

She received her B.A. in 1984 and her J.D. in 1987, both from Harvard University. Prior to entering academics in 1994, Professor Chua practiced with the Wall Street firm of Cleary, Gottlieb, Steen & Hamilton, where she worked on international transactions throughout Asia, Europe and Latin America.

BANK LEUMI USA SALUTES THE KOREAN AMERICAN FAMILY SERVICE CENTER

OFFICES:

NEW YORK
ILLINOIS
CALIFORNIA
FLORIDA

COMMERCIAL BANKING
INTERNATIONAL BANKING
PRIVATE BANKING

800.892.5430

www.leumiusa.com

Member of the Leumi Group



BIOGRAPHIES



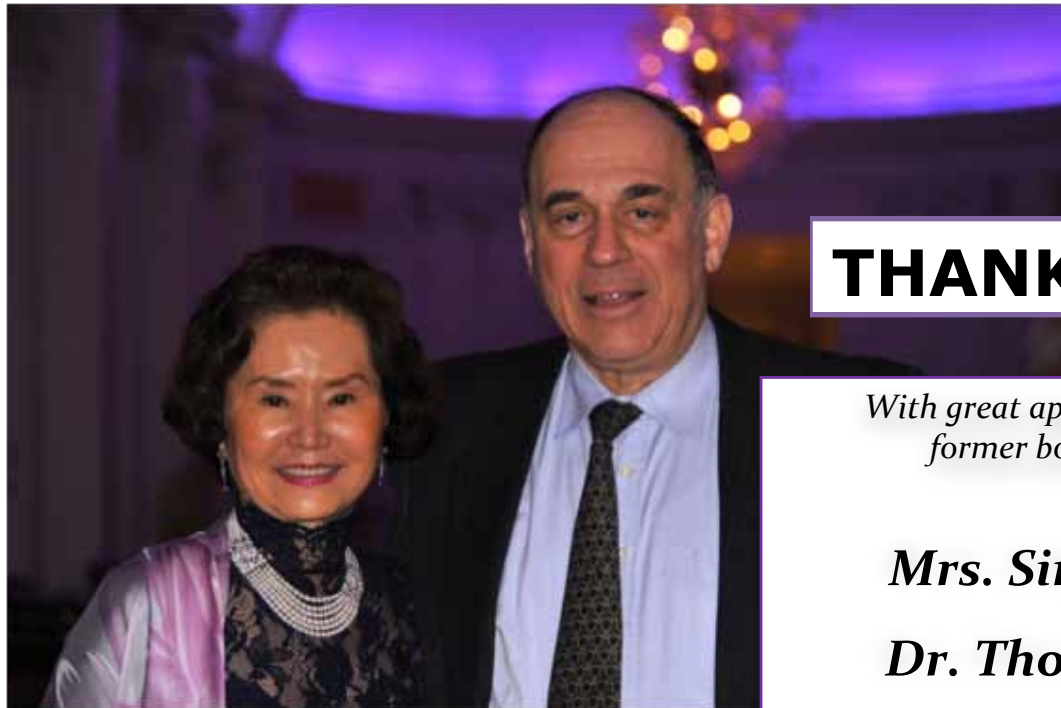
SPECIAL PERFORMANCE

Hodori Samulnori

KAFSC's Hodori After-school Program has a variety of special classes ranging from arts and crafts, taekwondo, music, fencing and traditional Korean dance and music (Samulnori).

Samulnori is a genre of traditional Korean percussion music performed with four traditional Korean musical instruments: a small gong (kwaeng-gwari), a larger gong (jing), an hourglass-shaped drum (jang-gu) and a barrel drum (buk). Samulnori is based on the principle of excitement and relaxation, as well as harmony of music notes. It has its roots in "farmer's music" (nong-ak), a Korean folk genre comprising of music, acrobatics, folk dance and rituals, which was traditionally performed in rice farming villages to ensure and celebrate good harvests.

During Hodori Program's Samulnori class, students learn the basics Korean drum rhythms and music. The Hodori Samulnori Korean Drumming team includes Instructor Koungh Soo Kim and Hodori students Lindsey Chun, Julie Han, Cion Kang, Angela Kim, Daniel Kim, Yeowon Kim and Yoo Jin. We are proud to have the students perform at tonight's gala and congratulate the students on their hard work.



THANK YOU!

*With great appreciation to our
former board member and
supporter,*

***Mrs. Simi Kahn &
Dr. Thomas Kahn***

The Board and Staff of the Korean American Family Service Center



***Thank You KAFSC for Your Compassion and
Commitment to Serving Our Community!***

Eddie & Sunyoung Chung



***We salute the Korean American
Family Service Center for its 23 years of
outstanding work in
raising hope transforming lives of
so many struggling women and children.***

***Congratulations to this year's honoree,
Circle of Friends for their 15 years of
dedication to KAFSC's mission.***

So proud of being a part of Circle of Friends!

***With Love,
Hisuh & Jesun Paik***

www.sagaponacknyc.com
amy@sagaponacknyc.com

SAGAPONACK



4 West 22nd Street (Off 5th Ave.), New York, NY 10010 212.229.2226

Sagaponack Bar & Grill is located in the Flatiron District just off of 5th Avenue. It is named for the Southampton village, a place that is near and dear to Chef / Owner James Kang, who is an avid fisherman.

Dinner is offered 6 nights a week, starting at 5:30 pm. Chef James and his culinary team take great pride in creating unique dishes. Our friendly and professional staff works diligently to ensure that all guests have a wonderful dining experience. Brunch is offered on Saturday and Sunday from 11 am to 4 pm.

Sagaponack has a semi-privated mezzanine level that accommodates up to 45 guests. It's the perfect place to hold business meetings, celebrate birthdays or host bridal parties. We also specialize in on- or off-premise catering for all types of events. Please call or email us with any inquiries. We look forward to serving you in the near future!



Art Gate Gallery

520 W 27TH ST. #101 NEW YORK, NY 10001
WWW.ARTGATENY.COM



Congratulations to our 2012 Honoree

Circle of Friends

KAFSC appreciates each one of you for being our constant supporter and ambassador for past 15 years.

Chan Koo Cho	Cecilia Kang	Hisuh Paik
Heather Choi	Claire Kang	Yoon Jung Choi Suh
Myung Shin Lee Chung	Karen Lee	Song Nam Suk
Misook Doolittle	Yun Yon Kang	Helen Yoon, MD
Yong Nam Jo, MD	Uni Berrie Marchese	
Simi Kahn	Eun Sook Pai	

지난 15여년간 한결같이 뉴욕가정상담소를 믿어주시고,
도움의 손길을 필요로 하는 이들에게 따뜻한 정성과 후원을 보내주신
Circle of Friends 분들께 진심으로 감사드립니다.





JOURNEY OF HOPE

The Story of KAFSC

From its origins as a grassroots support group to the nationally recognized and funded operation it is today, the Korean American Family Service Center (KAFSC) has evolved to become a leading nonprofit organization that empowers adults and youth to lead safe and healthy lives. The Center is committed to ending domestic violence and relationship abuse through culturally and linguistically appropriate counseling, education and advocacy programs in the New York Tri-State area.

The Beginning

In 1989, a handful of Korean American women recognized the unique plight of battered women in their community and decided to take action. Kwanghee Kim, a founding member who's still active with the organization, sold her jewelry to raise money for the Center's initial costs. The Center started with nothing more than hope in the basement of a Manhattan church.

In its first years, community volunteers received training to work with battered women, and soon survivors came together to form a peer-support group called the Ottuki Club, which became WISH (Women with Independence, Support and Hope).

In 1991, the New York Women's Foundation gave KAFSC its first major grant. The money allowed KAFSC to hire employees, and paved the way for grants from the Avon Foundation for Women, Beautiful Foundation, Daphne Foundation,

Grace & Mercy Foundation, KACF, Ong Family Foundation and many more.

In 1998 and with funding from the New York State Division of Criminal Justice Services, the Center created the first, bilingual 24-hour crisis hotline in the Tri-State area. KAFSC is currently the only Korean American agency to operate such a hotline for domestic-violence victims on the East Coast.

In 1999, KAFSC was honored as one of eight national recipients of the Outstanding Service Award, as presented by U.S. Attorney General Janet Reno at a ceremony in Washington D.C. Taking further steps to emphasize the importance of healing and recovery, the Center changed its Korean name from Ga-Jung Moon-Je Sang-Dam So (가정문제 상담소) to Ga-Jung Sang-Dam So (가정 상담소), dropping "Moon-Je" which means "problem." And to be more accessible to its clients, the Center relocated from Manhattan to Queens in 2000.

Transitional Housing Program

In 2009, KAFSC became one of 58 national agencies to receive a \$250,000 grant to launch a Transitional Housing Program, the only one of its kind in New York for Korean American women.

Current Board Chairwoman Sarah BJ Sung views the Transitional Housing Program as, "an incredible turning point for the Center. Housing is a critical issue for our clients,

7



Associate Board members dedicated to supporting KAFSC's mission

11



Women and children in two Transitional Housing units

15



KAFSC Board members—a veritable dream team!



and unfortunately, emergency shelters are often full or not culturally sensitive to them.”

With this program, KAFSC offers victims and their children an opportunity to recreate a stable family structure and helps them back on the path to independence. Thanks in part to free legal counseling from KAFSC’s legal partners, plus the Center’s ESOL program and individual tutoring, KAFSC saw our first group of clients safely graduate from the program. Two of the four families obtained immigration status

and secured jobs. All of them found safe, permanent housing and are now standing with regained confidence and hope.

Currently, the Transitional Housing units house five families and 11 individuals.

Programs for Children & Youth

KAFSC has developed the Hodori After-School Program, the Youth Community

Project Team (YCPT), the Teen Support Group, and the Unni-Hyung Mentoring Program (Big sister-Big brother) to provide Korean American youths an avenue to make positive changes in their community and become confident leaders.

HODORI AFTER-SCHOOL PROGRAM [THE HODORI PROGRAM]

The Hodori Program offers activities that are culturally relevant to students of all ethnicities in grades one to five. This

22
Full and part-time staff members

130
Average number of hotline calls KAFSC receives and responds to each month

157
Children on the waiting list Hodori After-school Program

program fosters creativity, academics and physical well-being in a positive emotional and social environment. Students are tutored by teachers and have access to certified counselors at no cost.

In March 2012, the Hodori Program Manager Mi Jung You, a licensed mental-health counselor, received a PASEsetter Award from the Partnership for After School Education in recognition of her seven years of commitment to the children and youth in the Korean American community.

YOUTH COMMUNITY PROJECT TEAM

YCPT is a student-operated group of local high-school students dedicated to creating positive changes in the Korean American community. These young volunteers design and conduct their own projects and hone their leadership skills while assisting members of the community with special needs.

Angie Cho, a current YCPT member, expressed how through YCPT she experienced change in herself. “I can now stand in front of my teammates and express my opinions loud and clear. I can be the leader that guides new members, like the leaders before me had done. Without YCPT, I would not have become the person I am today.” She continues, “I learned that even though I am only one person, when collaborating with others, we become invincible.”

TEEN SUPPORT GROUP

KAFSC’s Teen Support Group provides a safe environment where our teenage clients can share their thoughts on topics

such as identity, dating, peer and family relationships, violence, as well as school and personal goals. They view KAFSC as a positive place to help them overcome their struggles through counseling, peer support and activities.

UNNI-HYUNG MENTORING PROGRAM

This “Big Sister-Big Brother” Mentoring Program matches youth ages 10 - 18 with an adult, typically a young professional or college student. Through careful screening of potential mentors, youngsters are matched with caring individuals who serve as both role models and friends.

The Future

These are just a few key achievements in the long, courageous journey of KAFSC. While much has changed in the last 23 years, KAFSC’s dedication and commitment have remained constant. The Center’s unprecedented success is the direct result of your support and commitment. Thank you for enabling us to continue to raise hope and transform lives.

VOLUNTEER SPOTLIGHT



Jung Martha Hong

OCCUPATION Medical equipment sales

INVOLVED WITH KAFSC Over five years

WHAT IS YOUR ROLE AS A VOLUNTEER?

I am one of the bilingual hotline dispatchers for KAFSC's 24-hour crisis hotline. I am also a computer instructor in the Center's Self-Sufficiency program.

HOW DID YOU GET INVOLVED WITH KAFSC?

I found a KAFSC brochure at the post office and my interest was piqued. I had been looking for a place to volunteer so I called and set up an interview.

WHAT IS THE MOST CHALLENGING PART OF BEING A VOLUNTEER?

The role of the hotline dispatcher is to ensure the client feels safe enough to give their information over the phone. We are the ones who first create the connection with the client. If the dispatcher is unable to create that connection, the caller may not call KAFSC again. As I interact with clients, whether it's in class or on the phone, I have to constantly be aware of the impact I have.

WHAT IS MOST REWARDING FOR YOU AS A VOLUNTEER?

One of the students in my computer class contacted her son, stationed in Iraq, via e-mail for the first time. She was in tears. As a hotline dispatcher, I even had opportunities to accompany clients to advocate on their behalf at a police station and at family court.

I admire these clients who've found the courage to break the cycle of violence and move forward with life. Knowing that I had a small part to play in their life-changing process is an unforgettable, rewarding experience.

Min C. Chang, Esq

OCCUPATION Attorney

INVOLVED WITH KAFSC One year

WHAT IS YOUR ROLE AS A VOLUNTEER?

I teach the advanced computer class, which is part of KAFSC's Self-Sufficiency program.

HOW DID YOU GET INVOLVED WITH KAFSC?

One of my past clients, who was a victim of sexual assault, needed legal assistance as well as counseling and support. I referred her to KAFSC and was extremely impressed with the progress she made in such a short period of time. Through this experience, I gained so much respect and admiration for the important work that KAFSC does. I knew that volunteering my time to this organization was something I wanted to do.

WHAT IS THE MOST CHALLENGING PART OF BEING A VOLUNTEER?

The most challenging part is learning how to adjust my schedule to find more time to help.

WHAT IS MOST REWARDING FOR YOU AS A VOLUNTEER?

Realizing there are so many dedicated individuals working toward such a noble and worthwhile cause and the positive results that come from their effort makes the experience one that I will never forget. Also, knowing I am a part of helping these women move one step closer toward achieving their goal of self-sufficiency is truly humbling.

PHOTOGRAPHY BY SHAO HAN LEE





FINDING HOPE

KAFSC client, Sarah Park*, courageously shares her story of living with domestic violence and how KAFSC changed her life forever.

Artworks by Wonsook Kim | Translated by Michelle Chu

*Name has been changed to protect client's identity.



Wilderness

I came to a small town in America with my husband. I was filled with dreams and excited for the future. Unfortunately, my hope did not last long.

After I became pregnant, my husband became increasingly irritable. He would come home drunk and throw objects at me. He made our house a place of terror and I was in constant mental anguish. Our baby was born and I begged him to stop, but he accused me of faking the pain. Finally, I called the police. After reporting the incident, my husband vanished.

Without a single friend or family member in this country, I felt trapped. I lost 20 pounds within 20 days and my breast milk dried up. I spent my days in a daze, contemplating the next life. It was a truly miserable, painful time, but my baby gave me a vague sense of hope.

what I was told over the phone. I barely managed to stay on this job for a month, eating ramen once or twice a week as my sustenance. I almost fell back into despair.

An acquaintance gave me the phone number for the Korean American Family Service Center (KAFSC) and said maybe they could help me. I called the 24-hour crisis hotline and the bilingual social worker I spoke with was Ms. Hee Ok Kim. She was a warm, professional person and truly an oasis for me. She gave me the courage and confidence I needed to take small steps and re-enter this world.

Even while writing this, I find myself pausing because of my tears, but despite the fear and misery I have suffered, I want to let others know about the people at KAFSC who have stood behind me. I want to rise from the pain and share my story.

Coming Home

I'll never forget the first day I walked into KAFSC. I was a little hesitant and my heart was closed. Ms. Hee Ok Kim ran to me with a smile on her face, and like a child finding comfort in her mother's arms, I spilled out my deeply rooted hurts in tears.

I finally felt the relief I so desperately needed through the genuine care and respect from the staff at KAFSC. I had found a new home and family, "Chin-Jung," in New York.

The staff provided me with so much emotional and material support. Through the Center's Transitional Housing program, my child and I found a safe place to live. With constant care, KAFSC helped chip away at the trauma that had been carved into my heart and I began once again to dream about my future.

KAFSC became the foundation upon which I rebuilt my life. I faithfully participated in their Self-Sufficiency program, individual counseling and the WISH group, where mothers like myself share experiences and parenting advice. Through KAFSC's assistance, my child went to a day-care center while I earned a home health aide certification.

My Hope, My Challenge

I will not be mired in my sorrow any longer. Through their love and guidance, the staff at KAFSC became my foundation and gave me the strength to find a place in this country.

Currently, I am studying for several licenses and working in order to ensure a better future for my child and myself. No matter how hard the road, I won't give up on my dreams.

The word, "thanks," is too easily thrown around, but this is the first time I feel genuine gratitude rise up from deep inside of me. I am truly grateful to KAFSC. To those who constantly pour out so much love and strength to those in need, I hope you will be touched with God's endless blessings and love.

Untitled, 1996,
Ink on paper, 30 cm x 30 cm

OPPOSITE **Spring Tree**, 2008,
Oil on canvas, 90 cm x 90 cm

The YWCA of Queens Congratulates the Korean American Family Service Center on 23 Years of Raising Hope and Transforming Lives

eliminating racism
empowering women

ywca

Queens

"Making a Difference, Together"

THE YOUNG WOMEN'S CHRISTIAN ASSOCIATION OF QUEENS

For more information on our programs,
please call (718) 353-4553 between 9:00 a.m. and 5:00 p.m.,
or visit www.ywcaqueens.org

The YWCA of Queens is a non-profit social service organization that puts individuals and families on a path to success and economic self sufficiency. In addition to our five comprehensive program Centers, the YWCA offers home health aide services and New York State licensed home health aide training and certification as part of our Women-to-Work program.

CENTER FOR CHILDREN

- 1.1 _ UNIVERSAL PRE-KINDERGARTEN PROGRAM
- 1.2 _ AFTER SCHOOL PROGRAM, PRE-K-6TH GRADE
- 1.3 _ AFTER SCHOOL PROGRAM, 6TH-8TH GRADE
- 1.4 _ SUMMER DAY CAMP / VACATION CAMPS
- 1.5 _ SUMMER LITERACY FESTIVAL

CENTER FOR ADULT

- 3.1 _ ADULT EDUCATION: ESOL
- 3.2 _ ADULT EDUCATION: ABE
- 3.3 _ ADULT EDUCATION: GED
- 3.4 _ "WOMEN TO WORK" (WTW)
- 3.5 _ ADVOCACY & PUBLIC HEALTH SERVICES

CENTER FOR ARTS AND CULTURE

- 5.1 _ THE NEW YORK MUSIC COMPETITION
- 5.2 _ ENRICHMENT PROGRAM
- 5.2.1 _ HANDICRAFT VOLUNTEER CLUB
- 5.2.2 _ EVERGREEN CHOIR
- 5.2.3 _ TRADITIONAL KOREAN CHOIR
- 5.2.4 _ EVERGREEN CHOIR
- 5.2.5 _ ADVOCACY & PUBLIC HEALTH SERVICES

CENTER FOR YOUTH

- 2.1 _ YW-ACCESS GED PROGRAM
- 2.2 _ YW-ACCESS PRE-GED PROGRAM
- 2.3 _ PROJECT C.I.T.Y. (VOLUNTEER PROGRAMS)
- 2.4 _ JOB READINESS & COUNSELLING

CENTER FOR SENIORS

- 4.1 _ Y EVERGREEN SCHOOL
- 4.2 _ HEALTH LITERACY
- 4.3 _ SENIOR MINI OLYMPICS
- 4.4 _ ENRICHMENT PROGRAM

Y EVERGREEN CARE

"Y EVERGREEN CARE" PROVIDES SERVICE WITH COMPASSION, SENSITIVITY, AND PROFESSIONALISM

We serve those seeking

- ☑ Companionship and assistance in old age
- ☑ Help with physical conditions and limitations
- ☑ Recuperative care
- ☑ Assistance with meals, including meal planning and preparation
- ☑ Transportation assistance
- ☑ Help running errands



www.wilshirebank.com

고객을 부자로 만드는 월셔은행의 법칙-⑤

스몰 비즈니스가 살아야
경기가 산다.

"It's small businesses
like yours that help
drive America's
economic growth."

월셔은행 SBA가
성공의 꿈을 키워 드리겠습니다.

월셔은행 SBA가 앞서 가는 이유!

- 한인은행중 가장 많은 LPO와 전미주 커버 Network
- 사전 승인이 필요없이 신속한 자체 융자 시스템
- 강력한 맨 파워와 신속한 처리능력의 SBA 융자 드림팀

친절하고 빠른 LOAN 센터

888.WSB.LEND (972.5363)

고객을 부자로 만드는 일,
월셔은행이 먼저 시작합니다!

월셔은행
WILSHIRE STATE BANK
Where Success Begins

FDIC SBA PLP LENDER

Manhattan Branch 212.695.5757
308 5th Ave., New York, NY 10001

Kwon Ho Jung
SBA Office | 212.465.7620

Flushing Branch 347.625.2800

150-24 Northern Blvd., Flushing, NY 11354

Bayside Branch 718.352.2855
210-16 Northern Blvd., Bayside, NY 11361

Fort Lee Branch 201.346.0346

215 Main St., Fort Lee, NJ 07024



Visions of Hope and Transformation:

PO KIM, JOHN PAI AND WONSOOK KIM

KAFSC is honored to have among its supporters three prominent Korean contemporary artists: Po Kim, John Pai and Wonsook Kim. We were fortunate to spend time with each of them and learn from their insight about art, what inspires them to keep going and why they help others. KAFSC is privileged to feature their works throughout this Journal.

Po Kim, **The Essence**, 2006.
Acrylic on Canvas, 72 x 60 in



Untitled, 1957.
Oil on Canvas, 85.25 x 71.75 in

PO KIM

Po Kim's career as an artist spans more than six decades. Born in Korea in 1919, Po Kim studied art in Tokyo, Japan. He returned to Korea in 1946 to establish the Fine Art Department of Chosun University in Kwangju, Korea. In 1955, he came to the United States and eventually moved to New York City and taught at New York University. In 2000, Po Kim received the Honorary Doctorate Degree of Letters from Chosun University. Trained in the academic style of painting, his work evolved into abstract expressionism in the 50s. As Jeffrey Wexler, Curator of Asian Art at the Jane Voorhees Zimmerli Art Museum at Rutgers has acknowledged, "Kim's contribution to American abstract expressionism is seen in his strong use of color inspired by Korean traditional art." Po Kim's works have been exhibited internationally in galleries and museums.

KAFSC is honored to feature Po Kim's work on the cover. We also received the rare chance to speak with him about his work, and the artist behind the art.



PHOTO: COURTESY OF PO KIM



KAFSC What first drew you to art?

PK Art came to me naturally. I didn't pursue art for money or status. I just wanted to draw and paint. Painting is simply what I do and lately, I find I want to paint as much as I can.

KAFSC What has helped keep you going through the highs and lows?

PK I went through some terrible times in Korea and Japan. What kept me going was the need and desire to be free and to be able to breathe. And by breathing, I mean (painting) without fear of enforced imprisonment and having to constantly look over my shoulder.

KAFSC What inspired you to create the cover art?

PK This particular picture represents my view on the free spirit. This is my fantasy vision of freedom.

KAFSC Creating art is like having a child. How do you feel when your art is sold?

PK I never thought of my art that way, but it's kind of true. My wife died last year. Recently I feel her soul is there when I see her artwork. I didn't feel that way when she was alive.

KAFSC Tell us about your favorite piece feature in the journal.

PK The piece [see *Untitled* on pg. 34] was not planned - I just started painting and it made me happy. I made it in 1957 and it remains my favorite piece. It depicts freedom for me.

KAFSC You've influenced many people. What advice would you give our readers?

PK Everyone needs to dream big. It will bring bigger results. Art is the same. It's about dreaming something you can't imagine in the real world.

KAFSC What do you think about the KAFSC?

PK Of course we need to help women in trouble. That's just common sense and the right thing to do.

Blue Tree, 2007.
Collage and Acrylic on Canvas, 84 x 144 in



Color Tape and Paper 01, 2007,
Tape on Canvas, 72 x 120 in



Notes from the Stars, 2008,
Ansan on the campus of the Seoul Institute of
the Art, Stainless Steel, 31 ft tall

John Pai was born in Seoul in 1937, and he and his family came to America in 1949. He found himself drawn to art at a young age and held his first show at the age of 14. In 1958, Pai received a scholarship and later a full-time fellowship for graduate study at Pratt Institute, where he studied sculpture. He taught at both Pratt and the Parsons School of Design, and in 1965, he became chairman of the undergrad sculpture program at Pratt. Pai has shown his work in Seoul, Paris and New York. His next exhibition will be held in Korea later this year.

John Pai and his wife are a long-time supporters of the KAFSC and we recently had an opportunity to speak with the artist. His work can be seen throughout the journal.

KAFSC What first drew you to art?
JP From the age of two, I was painting and drawing. At eight years old, I was studying with an artist. It wasn't until I went to Pratt that I got interested in sculpting.

KAFSC What has helped keep you going through the highs and lows?
JP One of the things that keeps propelling me to create is something Theodore Rozsak said to me. I was his assistant while he was preparing for an exhibition at the MOMA and he said that life is a process. He said this to me as I was struggling to make some key decisions about my life. What I took away from this is that the end is not the solution.

KAFSC You have influenced many people. What advice you would you give to our readers?
JP I would say hope, too, is a process. When I was playing football back in my younger days, I wasn't as tall as the other guys nor was I as strong and fast. My coach told me to work on the rhythm, running and strength building. Again, it's all about the process leading to results. Take one unit at a time and don't look at the whole thing because it would be too overwhelming.

KAFSC What comment has surprised you the most about your work?
JP "I had to buy your work. It winked at me," an American collector once told me. Initially, I thought he was crazy but he was a serious collector. What I learned from this was that each person creates a view of the artwork that comes from their own memories, value systems and perspectives. An artist can create their work with a viewpoint but they cannot dictate what the audience sees.

KAFSC Tell me about one of your favorite pieces.
JP A gallery owner once sold one of my pieces to two different collectors, leaving a mess to clean up. I was deeply disappointed and angry, and I turned to sculpting to deal with what I was feeling. You know how writers will attempt writing and if they don't like it, they crumple up the paper and toss it? I started with a small piece and just kept going. It took me about three years to complete and once it was done, it looked like a gigantic crumpled paper. Completing this piece was cathartic for me. I titled the piece "Gyekoom" – an expression within the Korean culture used to dismiss a disturbing nightmare as merely consequential. The piece is now in Ho-Am Art Museum in Korea [a museum built by Samsung's former chairman Byung Chull Lee].



PHOTO: COURTESY OF JOHN PAI

TOP In Whose Image, 2009,
Welded Steel, 46 x 46 x 32 in
OPPPSITE Story Teller's Dilemma,
Welded steel

WONSOOK KIM

Born in 1953 in Busan, Korea, Wonsook Kim was lured to art at a very young age. After graduating from Hong-Ik University in Seoul, she earned her B.A. and Masters in Fine Arts from Illinois State University in 1974 and 1976, respectively. In 1995, her lithograph, *Full Moon Lady*, was commissioned by WFUNA (World Federation of United Nations Associations) to commemorate the 50th anniversary of the United Nations. Her works have been exhibited in galleries and museums worldwide. At a symposium on Korean Art and Literature at North Park University,

Tim Lowly compared Kim's art to those of Marc Chagall's stating, "Both artists present a body of work which in its straight forward pursuit of a type of spiritual humanism seems to have little or no regard for being au courant with the rest of the art world." and accomplished writer, Wonsook's latest book, *그림 선물 (Art Gift)*, is a beautiful collection of thoughts, inspirations and reflections while showcasing her sculpture and paintings. Wonsook is a long-time supporter of KAFSC and we were fortunate to converse with the artists. Her pieces can be seen throughout the Journal.



Planting and Resting, 1997,
Oil on wood, 18 cm x 36 cm



PHOTO: COURTESY OF WONSOOK KIM



KAFSC What attracted you to becoming an artist?

WK Being an artist is the best job in the world. My art is about life – what I have lived through and happened around me. It's a by-product, and sometimes, a reinterpretation of life. I have the best time possible when working and enjoy what's given to the fullest.

KAFSC How do you overcome difficult events in life?

WK When I come across difficult moments, as I wrote in my recent book, I remind myself, “그래, 걱정 마, 이게 다 좋은 그림밥이야. (Don't worry. This is all good food for art.)” I try to gain perspective of the situation. If I am so caught up, my view narrows. I need to pull back and look at the bigger picture. It also helps that I'm a habitual optimist.

KAFSC Please share why your pieces incorporate many images of women.

WK Women are sensitive but strong. They are insecure but very sure. These concepts come together in my pieces. Some pieces represent a transformation. In order to transform, it's how you view and overcome. You're the only one who can see beyond. You have the power to make the change.

KAFSC You helped countless people for decades. What is your advice to those who want to volunteer?

WK Over the years, I found that by helping others, I can disappoint myself. There's so much I want to do, and if I don't do it, I'm disappointed. But I learned to turn around that view. I have to be selfish and make it about me. There's less chance for disappointment because the focus is on me, not on others. I always ask, “What makes you a good human being?” and follow the answer.



TOP **St. Bart island, 2003,**
Oil on canvas, 38.2 x 63.9 in

BOTTOM **From the Dust, 2010,**
Acrylic on canvas, 165 cm x 136 cm



*Living Faith Community Church Mercy and Justice Team
sends our sincere congratulations to Korean American
Family Service Center for their work in the community.*

*For more information about our church please visit
www.lfcc.net*

**The Fresh Air Fund salutes the Korean
American Family Service Center for its
dedicated service to the Queens Community.**

the *Fresh Air* fund
serving children since 1877

www.freshair.org 800-367-0003



COMMITTED TO
DIVERSITY.

WE ARE PROUD TO SUPPORT
THE KOREAN AMERICAN FAMILY
SERVICE CENTER



*At Edwards Wildman, we are committed to diversity. We know that
diversity in the firm makes us better lawyers. It enables us to bring a
wide range of perspectives and life experiences to the work we do.*

Learn more about our efforts at Diversity.edwardswildman.com.

**EDWARDS
WILDMAN**



BOSTON • CHICAGO • FT LAUDERDALE • HARTFORD • LONDON • LOS ANGELES • MADISON NJ
NEW YORK • NEWPORT BEACH • PROVIDENCE • STAMFORD • TOKYO • WASHINGTON DC
WEST PALM BEACH • HONG KONG [associated office]

LaGuardia Community College
President Gail O. Mellow
Faculty, Staff and Students

are
proud to support

The Korean American Family Service Center

at their

23rd Annual Benefit Gala



Holy Name Medical Center

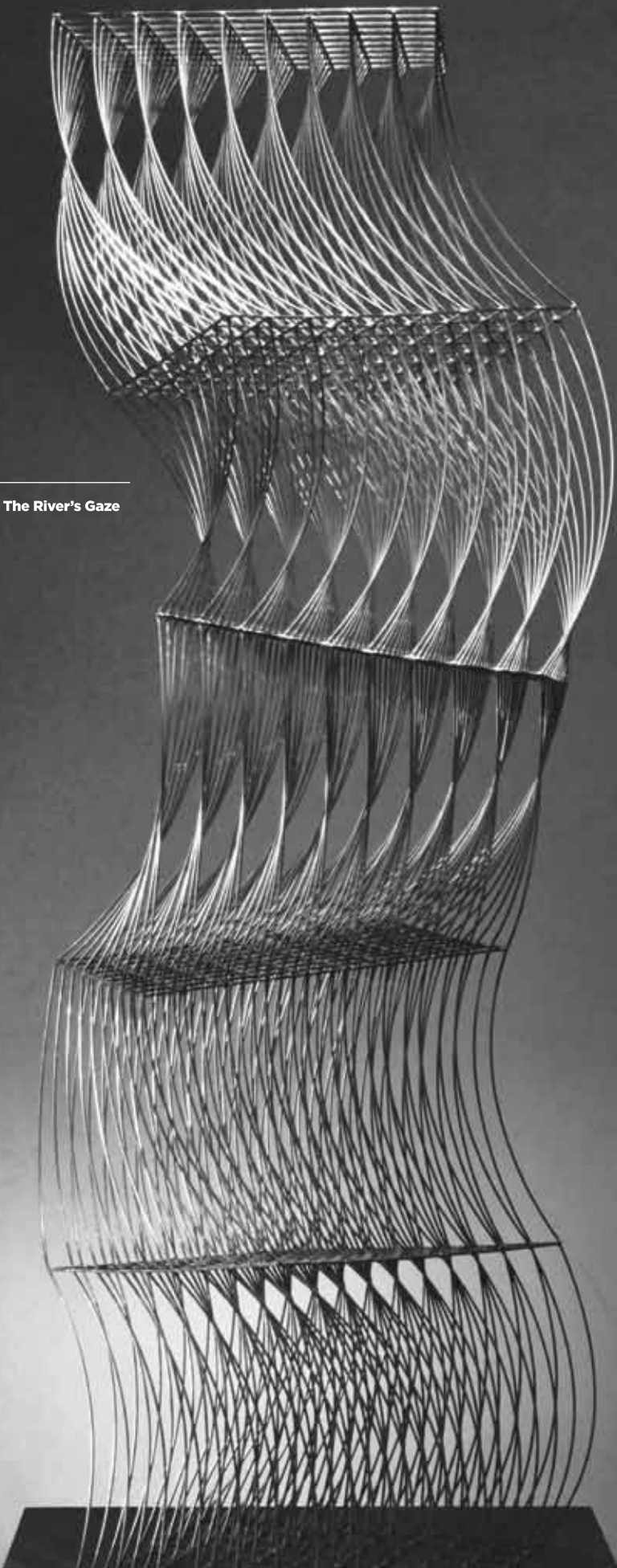


We are proud to support
KAFSC's
23rd Annual Benefit Gala
“Raising Hope... Transforming Lives”



Healing begins here * www.holyname.org
718 Teaneck Road, Teaneck, NJ 07666 * 201.833.3000

John Pai, *The River's Gaze*



FINANCIAL REPORT

PROGRAM HIGHLIGHTS

KAFSC OFFERS A BROAD RANGE OF PROGRAMS AND SERVICES FOR WOMEN, MEN, CHILDREN AND YOUTH, WITHOUT CHARGE. OUR COUNSELORS ARE BILINGUAL AND POSSESS A MASTER’S DEGREE IN SOCIAL WORK, COUNSELING OR THERAPY. ALL CASES ARE KEPT STRICTLY CONFIDENTIAL, AND WE RETAIN THE RIGHT TO THEIR PRIVACY EXCEPT AS REQUIRED BY LAW.

ADULT PROGRAMS

24-hour Crisis Hotline 718-460-3800

Open around the clock, seven days a week, our bilingual hotline offers crisis counseling, safety planning, and emergency shelter placement to victims of domestic violence, sexual assault, or other personal crisis, at any hour of the day or night. It also provides information, referral, and advocacy.

Individual & Family Counseling

KAFSC’s core program is counseling, available to all clients (women, men, children, and youth) and including crisis intervention, and counseling on a short-term or longer-term basis. Our models are individual one-on-one sessions or integrated sessions including other family members. Counselors help to address a variety of problems usually triggered by domestic violence, sexual assault, child abuse, or other personal or family crisis. They involve a broad range of factors including emotional distress, depression, isolation, conflict, fear and anger. In addition to domestic violence and abuse, issues frequently include divorce, parenting, discipline, inter-generational conflict, poverty, crime, addiction, and bereavement.

Transitional Housing Program

In 2009, KAFSC was one of 58 national agencies selected to receive our first federal grant from Department of Justice to launch the only Transitional Housing

Program for Korean/Asian women in New York. We provide culturally sensitive and linguistically appropriate long-term housing options for immigrant women who need to secure physical safety. We help them overcome many barriers and secure physical, emotional, and financial independence.

Legal and Social Service Advocacy

Domestic violence and sexual abuse survivors learn of their legal rights and options through free Legal Clinics and one-on-one consultations provided by attorneys from partner agencies such as Sanctuary for Families and Queens Legal Services. We provide other support including emergency cash and help to access health care and other public benefits, as well as court advocacy and interpretation for orders of protection, child custody, and other legal rights.

Women’s Support Group (WISH)

Women with Independence, Support and Hope was launched in 2003 for domestic violence survivors to gain self-awareness, confidence and self-reliance. Today it is an art-based support group that includes women from the community at large. Through a variety of art therapy activities members learn self-expression, communication skills, stress release, conflict resolution, and self-care. They meet weekly for 12 weeks to share experiences in a creative, safe, non-judgmental environment.

Staff provides guidance, encouragement, and resources.

Sexual Assault Intervention

KAFSC is the only organization in our community to offer assistance specifically to sexual assault and rape victims. We provide crisis intervention, counseling, court advocacy and support services to women and girls who have been victimized. Like domestic violence, this issue cuts across all ages and socio-economic strata, and is slowly gaining some awareness in our community although it continues to require extensive education and outreach.

Economic Empowerment

Job readiness skills are provided to clients to gain self-confidence, basic skills, and economic self-sufficiency. A critical skill is English language ability, which is taught by volunteers in class sessions as well as in individual tutorial sessions. From time to time we conduct workshops on financial literacy, clerical skills and basic computer skills. We also offer interviewing skills and job referrals for clients who are ready to seek employment.

Information and Referral

We handle requests for various types of information beyond our own programs and services, such as immigration and naturalization, access to entitlements, health care, child care, elder care, housing, and how to navigate the complex systems of the city’s public schools and social ser-

vice agencies. We make referrals to bilingual attorneys, shelters, medical services, and other social services and, where necessary, provide assistance and interpretation.

CHILDREN AND YOUTH PROGRAMS

Hodori Program

The Hodori After School Program operated by KAFSC offers a mix of creative, social and academic activities that is culturally relevant and developmentally appropriate to students between the ages of six to eleven, or grades 1 to 5. The program fosters physical well-being, as well as a positive emotional and social environment. Students are tutored by teachers and teachers’ aides. Also students have access to certified counselors who provide therapy and counseling to nurture the students’ emotional and behavior growth. The program serves all ethnicities and operates out of JHS 189 in Flushing.

The Hodori Program operates Mondays through Fridays, from 3:00 to 6:00pm, during the academic school year. It provides opportunities to have educational field trips to cultural events, museum and nature adventures. Individual counseling is available to all students, if needed. The small group counseling helps students to improve communication and social skills through discussion and role-play conversations. The monthly parent meetings offer parents a chance to discuss a variety of issues with counselors. Also provided are parent education workshops featuring guest speakers covering a diverse range of topics such as positive discipline, anger management, conflict resolution, sex ed, and safety measures in and outside the home.

Youth Community Project Team (YCPT)

YCPT is a student-led and operated group of local high school students dedicated to

creating positive changes in the Korean American community. Through weekly discussions and analyses of the community’s needs, these young volunteers determine, design and conduct their own projects and hone their team-building and leadership skills while assisting members of the community with special needs.

Teen Support Group

KAFSC provides a supportive environment for young clients ages 12-18 to share their thoughts and feelings on topics such as identity, peer and family relationships, dating violence, school, and personal and life goals. With guidance from a counselor, teens receive support and encouragement from each other. They view KAFSC as a positive and safe place to overcome their struggles through discussions, games and field trips. Counselors use facilitation techniques to help teens speak openly, develop self-awareness, empathy for others, and improve their social and conflict resolution skills.

Unni - Hyung Mentoring Program

This “big sister-big brother” program matches young clients ages 7-18 with an adult, typically a young professional or older college student, who provides friendship and guidance. Through careful recruitment and screening of potential mentors, youngsters are matched with caring individuals who serve as both friend and role model. These positive relationships enable the mentors to help their little brothers and sisters to broaden their interests, cope with identity issues, improve self-esteem and develop school and career goals.

COMMUNITY OUTREACH PROGRAMS

Volunteer Training

Twice a year, an intensive 6-week training course prepares bilingual volunteers for

work on the 24-hour hotline. Training topics include the nature and incidence of domestic violence, rape, sexual assault, child abuse, and other related issues. Volunteers learn techniques for crisis intervention and counseling, and details about community resources on a regular basis. When on hotline duty, volunteers are backed up by a staff counselor. When not covering the hotline, these volunteers provide valuable help and advocacy to clients in court, hospitals, schools, and social service agencies.

Silent March Against Domestic Violence

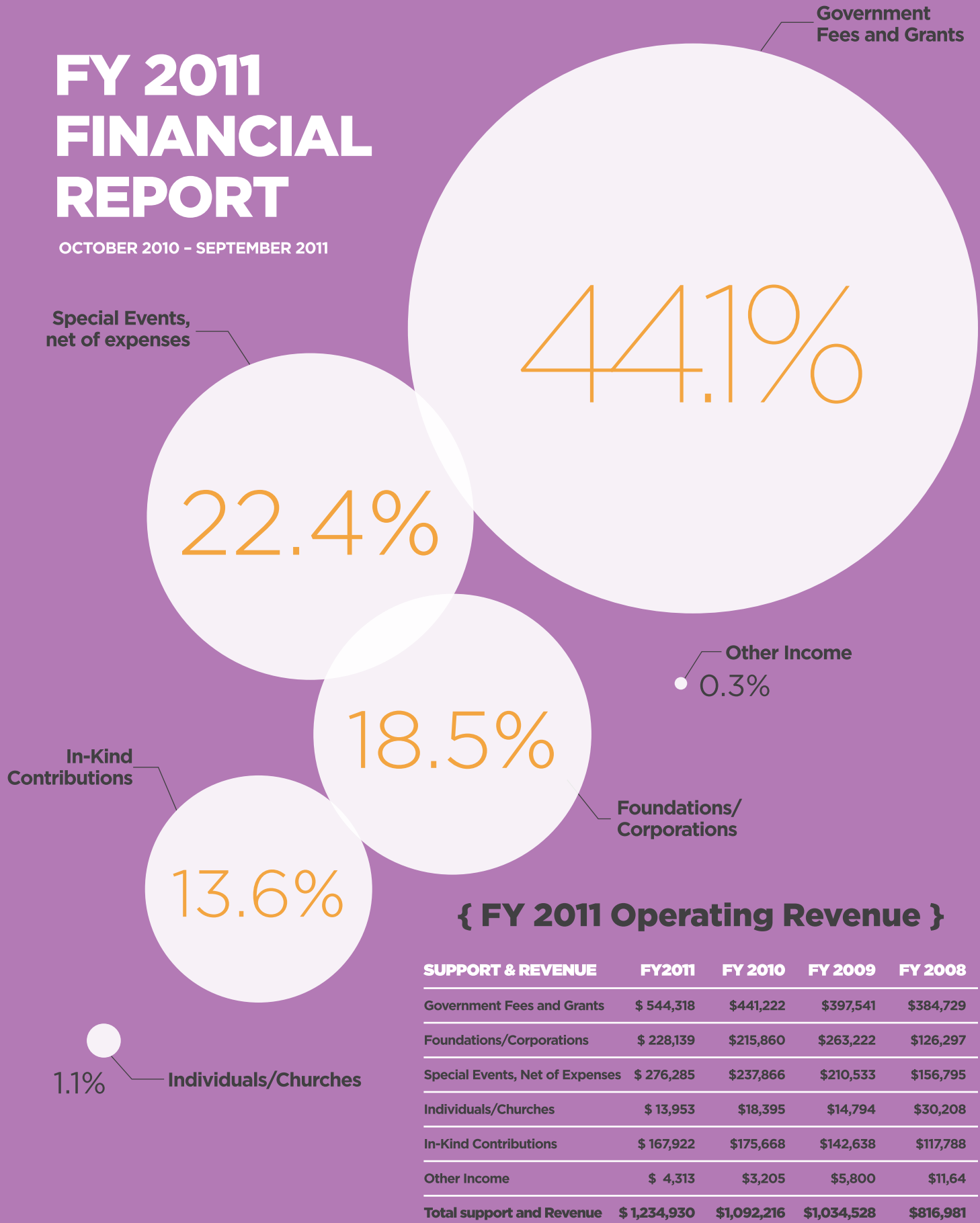
Every year during Domestic Violence Awareness Month (October), KAFSC organizes a silent march in partnership with local police, churches, various sister agencies and other community-based organizations to raise awareness about domestic violence and advance the cause of social justice for its victims. Participants march in silence through the streets of Flushing protected by police escorts, to honor the many lives lost to domestic violence and reaffirm our commitment to its eradication.

Community Education and Outreach

Our education and outreach consist of community workshops, speaking at local events, appearing on radio and TV, and regular articles in the Korean press. We visit schools, churches, hospitals, police stations, and other nonprofit and civic organizations. Subjects cover a broad range including parenting skills, communication skills, education, dating relationships, anger management, conflict resolution, sexuality, family dynamics, and other topical issues, as well as information on our programs and services. All our workshops are free and open to the public.

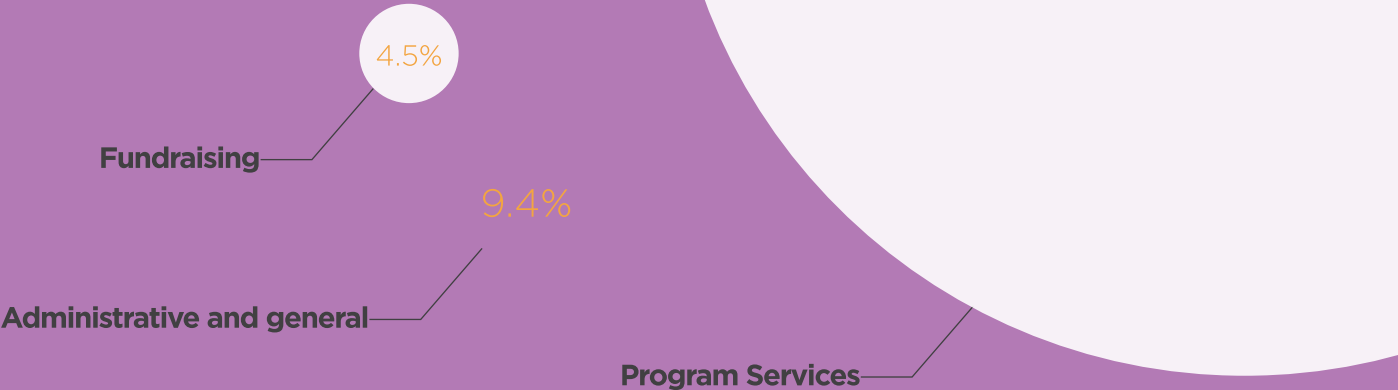
FY 2011 FINANCIAL REPORT

OCTOBER 2010 - SEPTEMBER 2011



EXPENSES	FY 2011	FY 2010	FY 2009	FY 2008
Program Services	\$ 926,178	\$806,467	\$685,803	\$645,980
Supporting Services				
ADMINISTRATIVE AND GENERAL	\$ 101,373	\$ 109,709	\$111,041	\$110,130
FUNDRAISING	\$ 48,679	\$ 81,807	\$49,505	\$45,794
Total Expenses	\$1,076,230	\$997,983	\$846,349	\$801,904

{ FY 2011 Operating Expenses }



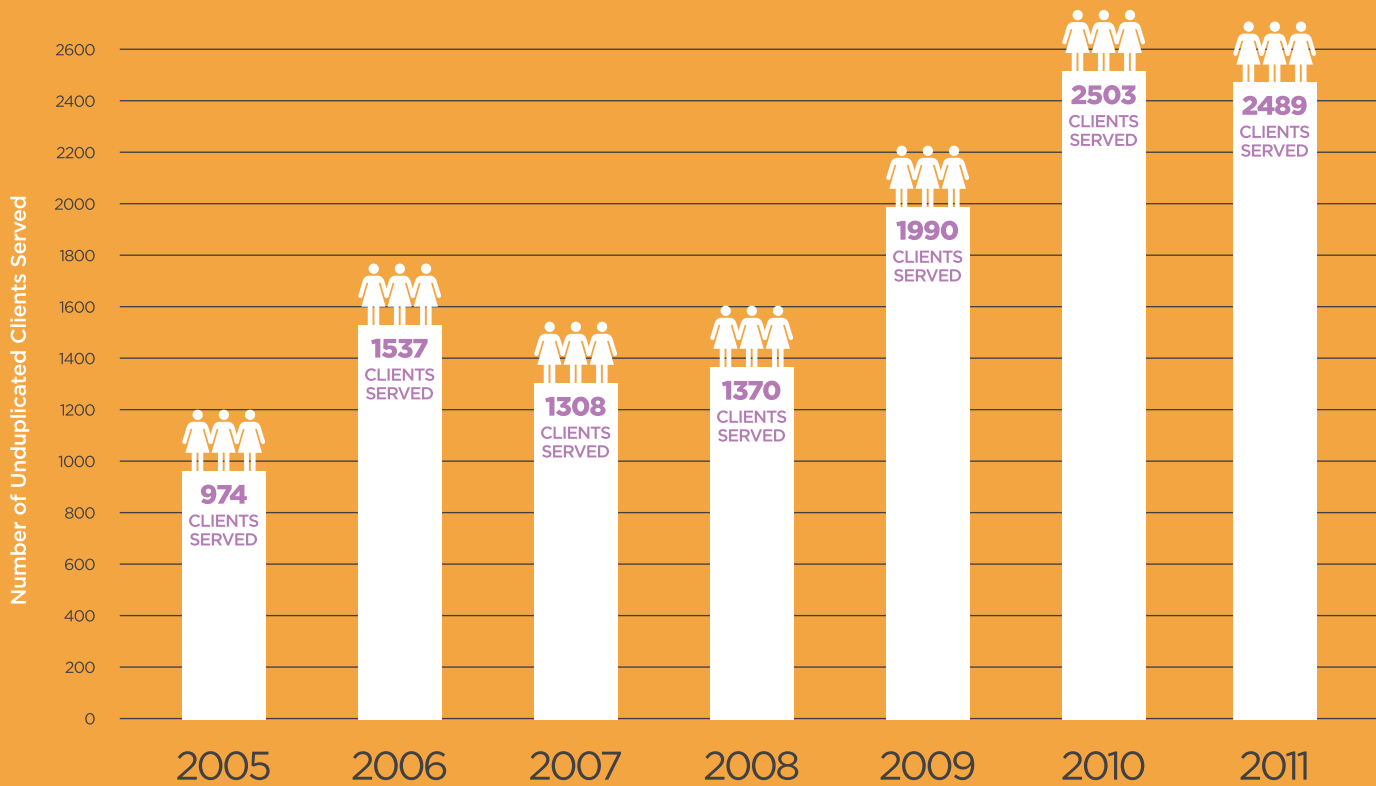
	FY2011	FY 2010	FY 2009	FY 2008
Change in Net Assets	\$ 158,700	\$94,233	\$188,179	\$15,077
Net Assets at beginning of year	\$ 390,427	\$296,194	\$108,015	\$92,938
Net Assets at end of year	\$ 549,127	\$390,427	\$ 296,194	\$108,015

FY 2011 STATISTICS

JANUARY 2011 – DECEMBER 2011

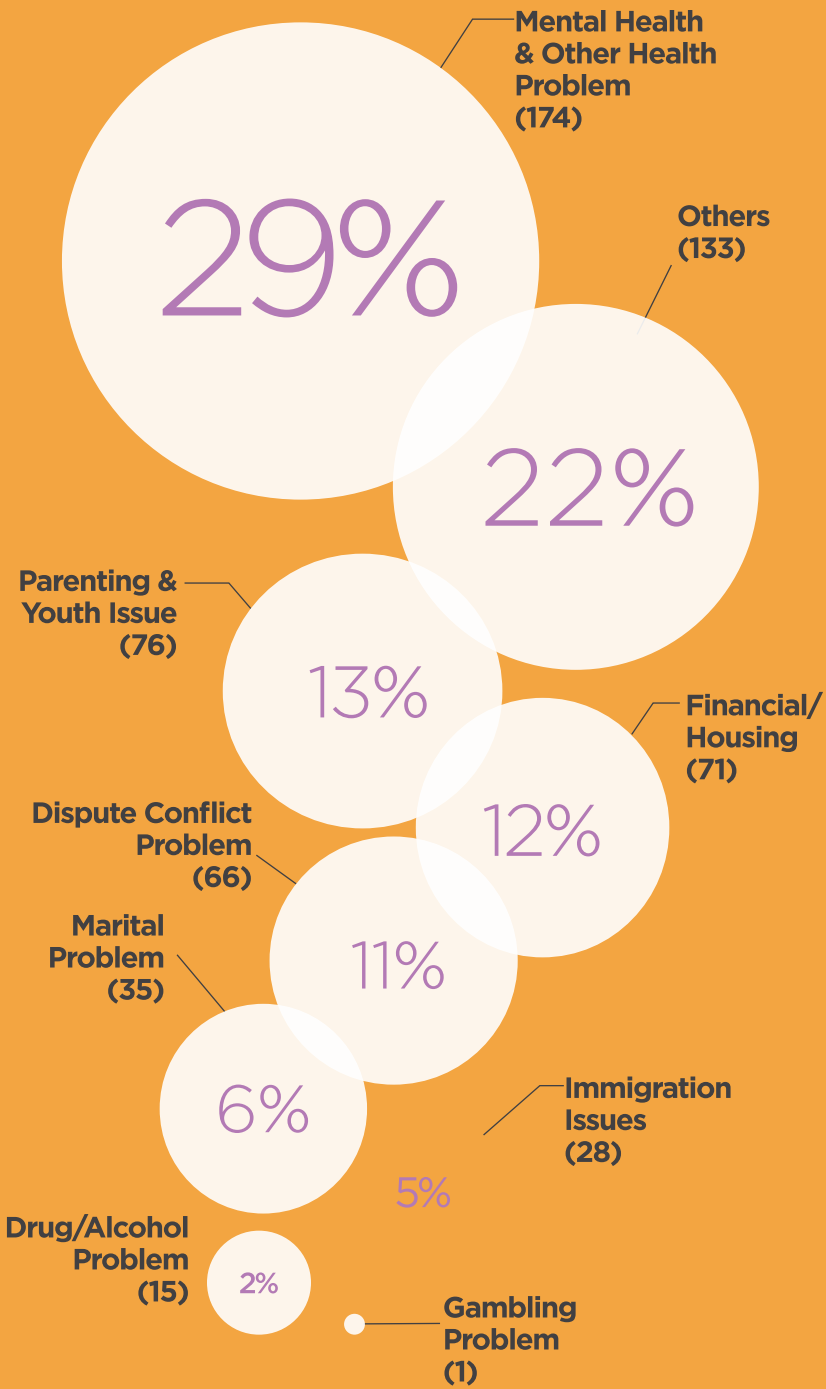
Domestic Violence (DV) 1,135
Sexual Assault (SA) 8
Other Issues Related 490
Total Cases 1,633

{ Number of Clients Served by KAFSC }



# of Cases	FY2011	FY 2010	FY 2009
Domestic Violence (DV)	1,135	916	1,167
Sexual Assault (SA)	8	53	29
Other Issues Related	490	730	259
Total Cases	1,633	1,699	1,455

{ Non-DV/SA Cases }



DOMESTIC VIOLENCE & VICTIM SERVICES	FY2011	FY2010	FY2009
Hotline Calls	1,754	1,409	836
DV/SA RELATED HOTLINE CALLS	1,378 (78%)	804 (57%)	630 (75%)
NON-DV RELATED CALLS	376 (22%)	605 (43%)	206 (25%)
WISH Program Participants	38	14	7
Self-Sufficiency : English Class	139	NA	NA
Self-Sufficiency : Computer Class	141	NA	NA
Legal Clinic Individual Participants	41	35	9
Individual Counseling Sessions (Phone and In-person)	2,180	1,910	1,576
Unit of Advocacy Services	1,328	1,167	1,146
Information & Referrals	889	808	915

EDUCATION/ OUTREACH PROGRAM	FY2011	FY2010	FY2009
Volunteer Training Participants	33	46	42
Total # of Hotline Volunteer Hours Spent	6,601	7,264	5,720
Public Education/ Workshop Participants	1,099	888	350
Community Outreach Events	64	25	48
Annual Silent March Participants	120	180	80
Newspaper Articles and Columns	86	75	52

CHILDREN & YOUTH PROGRAM	FY2011	FY2010	FY2009
Hodori Program Participants	89	133	143
AVERAGE ATTENDANCE RATE	96.7%	95%	95.4%
Group Parenting Participants	210	270	137
# OF GROUP PARENTING WORKSHOPS HELD	10	18	24
Summer Camp Participants through the Fresh Air Fund	79	78	53
YCPT Members	66	170	140
AVERAGE RETENTION RATE	88%	86%	80%
# OF STUDENTS WHO RECEIVED PRESIDENTIAL COMMUNITY SERVICE AWARDS	4	14	18
TOTAL COMMUNITY SERVICE HRS EARNED	3,117	5,241	5,398
AVERAGE SERVICE HRS PER STUDENT	47	36	39
Mentoring Program Matches	20	18	4



J U N G S I K

정 식 당

NEW KOREAN FINE DINING

Jung Sik offers a modern and unique understanding of contemporary cuisine—the "New Korean" as christened by Chef Yim. We invite you to experience the bold flavors and whimsical offerings at Jung Sik restaurant.

2 Harrison St. New York, NY 212 219 0900 www.jungsik.kr

"The first high-end, thoroughly modern Korean restaurant in New York"
The New York Times

www.daedongmanor.com www.forevertogetherwedding.com

DAE DONG MANOR, FOREVER TOGETHER OPEN EVENT!
一石二鳥 結婚 **JACKPOT**

ONE-STOP SHOPPING FOR WEDDING, AND GET \$20,000!

1st PRIZE CASH \$20,000 Cash \$20,000	2nd PRIZE CASH \$5,000 Cash \$5,000	3rd PRIZE GIFT Certificate \$3,000 \$3,000 Value Studio Photography Gift Certificate (includes hair/makeup included)	4th PRIZE GIFT Certificate \$2,000 \$2,000 Value Skin Care Gift Certificate (\$200 Value X 10 sets)
--	--	---	--

5th PRIZE \$500 Value Photography Gift Certificate **6th PRIZE** \$300 Value Skincare Gift Certificate (5 winners)
7th PRIZE \$200 Value Skincare Gift Certificate (10 winners)

EVENT PERIOD JAN. 1st. 2012 ~ DEC. 30th. 2012
TO PARTICIPATE Make a reservation for wedding reception / catering at DAE DONG MANOR or FOREVER TOGETHER's wedding total package.
HOW TO APPLY You will be automatically registered upon reservation.
WINNER ANNOUNCEMENT DATE DEC. 31st. 2012

Also eligible if you make a reservation in advance for 2013 events!
This event is limited to wedding reception/catering reservations only. Prizes cannot be transferred to third parties. If you cancel your reservation after the winner announcement date, your prize will be automatically forfeited. Winners are responsible for all applicable fees and taxes associated with acceptance or use of any prize. All prizes must be picked up in person or any shipping and handling charges will be applied to the person. Employees of Daedong Manor & Forever Together and their immediate family members are not eligible to win any prize.

For Inquiry Calls : 718.939.2555(DAEDONG MANOR), 516.773.0142(FOREVER TOGETHER)

Manor 大東園會場
150-24 Northern Blvd., Flushing, NY 11354

FOREVER TOGETHER
11 Northern Blvd. (ACROSS HARVEST BUFFET) Great Neck, NY 11021



We would like to recognize our wonderful members of the Board of Directors who stepped down their positions in the last three years

*Sue Cho
Simi Kahn
Julia E. Shin
Kyun Yi, Esq.*

*Joung Hee Hong
Hali Lee
Helen Song*

*Your spirit, drive, insight, commitment,
and dedication to KAFSC will remain with us forever*

Thank you!

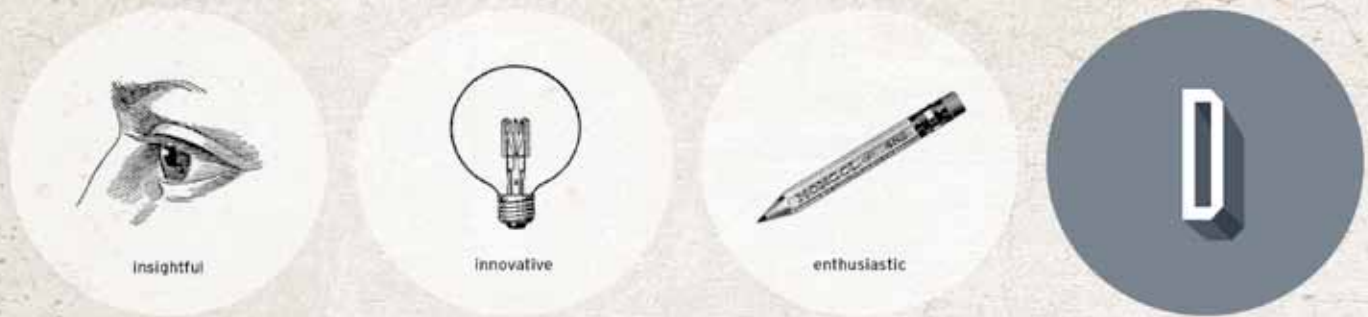
The Board and Staff of the Korean American Family Service Center



Wonsook Kim, **Ascent**, 2009,
Mixed media on canvas, 76 cm x 61 cm

SUPPORTERS

*"CONGRATULATES THE KOREAN AMERICAN FAMILY SERVICE CENTER FOR
23 YEARS OF SERVICE TO THE KOREAN AMERICAN COMMUNITY"*



DAISY KIM DESIGN
www.cargocollective.com/daisykimdesign
daisy@daisykimdesign.com

23RD ANNUAL BENEFIT GALA

SPECIAL GRATITUDE AND APPRECIATION TO THE GALA CO-CHAIRS, BENEFIT COMMITTEE MEMBERS, SUPPORTERS AND VOLUNTEERS FOR THEIR GENEROSITY AND COMMITMENT TO MAKING THIS EVENING A MEMORABLE ONE.

GALA HONONARY CHAIR
Misook Doolittle

MISTRESS CEREMONIE
Vivian Lee, NY1 News

KAFSC THANKS ITS DONORS & SUPPORTERS FOR THEIR GENEROUS CONTRIBUTIONS:

* as of April 22, 2012

John Yoo
Kenneth and Ellen Blau
Kwanghee Kim & Dr. Chin Ok Lee
Orsyn Corporation
Park & Jensen

GALA CO-CHAIRS
Paul Yoon
Yung Moon

SPECIAL THANKS TO THE FOLLOWING CONTRIBUTORS:
Daisy Kim, Design Director, Gala Journal and Website
Do Kwon, Photographer
Erin Lee, Photographer
Eun Man Kim, Graphic Designer, Gala Journal
Jasmine Chae, Occasion 9, Floral arrangements

23RD ANNUAL BENEFIT GALA SPONSORS
PLATINUM (\$20,000)
Harry & Misook Doolittle

GOLD (\$10,000)
Wha Sup Chung & Myung Shin Lee

SILVER (\$5,000)
BBCN
Circle of Friends
Dong S. & Yoon Jung Choi Suh
Edward & Sunyoung Chung
Ernst & Young
Helen Song and Lap Chan
LFCC Mercy & Justice Ministries
Melissa Ko
Michael D. Yim, Esq.
New York Hospital Queens
SELF Magazine
YuKyong Kianna Choi, BOND
New York

WE THANK THE ARTISTS FEATURED FOR THEIR GENEROUS CONTRIBUTIONS :
John Pai
Po Kim
Wonsook Kim

TABLE SPONSORS (\$2,750)
Aiyoung Choi
Bijay Kim, KPMG
Chan & Ruth Thomas Suh
Dr. Hyesuk Chong & Yoon Hee Lee
Helen Yoon, MD
Joon P. Hong, Richards Kibbe & Orbe, LLP
Lauren U.Y. Lee, Cadwalader, Wickersham & Taft, LLP
Paul Yoon, Esq.
Peter Stewart
Sandor Hau
Sarah BJ Sung
Shin Choi

GALA DONORS
Abigail E. Disney & Pierre N. Hauser
Ace Insurance
(matching for Peter Woo)
Amy Liu
Anne E. Delaney
BNB Bank
Dr. Thomas & Simi Kahn
Ilhyung Rhyee
IlHyun Jung, DDS & Martha Hong
Jane Y. Mun
Jeannie Park
Joan Kim

JWin (I-Liv Creative Technology)
Kang Suh Restaurant
Matthew Moore
McDonald's/IW Group
Misun Hwang
Peter Woo
Ronald Giller
Rosenthal & Rosenthal
San Soo Gab San Korean Restaurant (Soogn Metro Inc.)
SCS Commodities Corp. Seaway International, Inc.
Selena Cohn
Taehong Lee
Taek Sun Han
Victoria Chi

Law office of M. Daniel Bach, Esq.
Lee Anav Chung, LLP
McDonald's
MinKwon Center for Community Action
Pacific Transit Services, Inc.
Proskauer Rose, LLP
Sagaponack Bar & Grill
Speedy Printing
Taxsmarter.com
Wan Soo Lee, MD, PC
Whitestone Car Wash/Whitestone Auto Center
Wilshire State Bank
Women In Need Center, Inc. (WINC)
Youngsol Corporation
YWCA of Queens

ADVERTISERS

Ahn Insurance
Bank Leumi USA
Book Chong Dong Restaurant
Chang Suk Lee, MD
Chorus Music Studio
CMS Risk Solutions
DABO Eyewear
DaeDong Manor
David InGook Chung, MD
Dr. Yom's Chiropractic
Edwards Wildman Palmer LLD
Fresh Air Fund
Hahm Ji Back Korean Restaurant
Hera Kim-Berman, DDS, MMSC, LLC
Hisuh Paik
Hodori After-school Parent Group
Holy Name Medical Center
Incentive Systems
Jin Go Gae Catering
Kanghan Family Health Center
Korean American Lawyers Association of Greater New York, Inc.
Korean American Women In Need (KAN-WIN)
Kunjip Restaurant
LaGuardia Community College
Law office of David K.S. Kim, Esq.
Law office of Kwang Soo Kim, Esq.

Emily Haydock
Estee Lauder Companies, Inc.
Eun Sook & John Pai
Fiddler's Elbow Golf Club
Folli Follie
Galleria on Fifth
Glaze Teriyaki
Grand Hyatt Hotel
Heidi Cody
Helen Song & Lap Chan
Hi-Fashion Beauty Suppliers
I Cut Hair
Jasmine Chae, Occasion 9
John Pai
Jungsook Grace Yoon
Kang Collection of Korean Art
Kelly Choi
Kimchi Taco Truck
Knabi Productions
Korilla BBQ
Kramer Portraits
Lee Young Hee Museum of Korean Culture
Lost Wax Studio
McDonald's/IW Group
Mel Grunau
MILKimchi, Inc.
Michelle Burford
Michelle Kim
MK Lounge
Mom & I Publishing Group, Inc.
MZ Wallace
New York Philharmonic
Po Kim
Ran Hwang
Rare Bare and Grill
Ricardo Rojas Salon
Rosi Kennedy
Saja
Sheraton LaGuardia East Hotel
Shin Choi Collection
Shisheido
Shobha
Shyun Song
Solomon R. Guggenheim Museum
Sparklingsol.com by Maccarella
Starbucks

IN-KIND CONTRIBUTORS

AMORE PACIFIC
Anand Mandhyan
Arena Event Space & Bobby Kwak
Art Projects International
Artisanal Cheese
B Spa Bar Inc.
Blanche Fur, Inc.
Cabot
Calvin Yee
Chan Koo Cho
Christine Yoo, the Wedding Palace
CityMD
Claire Kang, Floral Artist
CLINIQUE
CLY Creation
COSMOS Department Store
Courtesy of the artist, Il Lee and Art Projects International, New York
D & Y
DABO Eyewear
Danji
David & Donna Kang
Dong Chun Dong
Dr. William & Stacy Kestin
DUO
Elizabeth Cho

Sulwahsoo
Suok Noh
Super Junior, K-Pop Stars
Teen Vogue
The Chateau at Silver Lake
The Daily Show with Jon Stewart
Third Floor Café
TOTO
Valjean Global
Wonsook Kim
Youngja Kim
Yuna Yang Collection

DONORS OCTOBER 2010 — SEPTEMBER 2011

The generous and critical support we have received from foundations, businesses, and individuals, as well as grants from state and local government agencies, are the lifeblood that continues to keep us alive. With each gift and grant, we received not only the vital funds to keep our work going, but also a strong affirmation of our mission, and what definitely feels like a personal encouragement for each of us to keep the faith, and stay the course. We are grateful for the following funders whose generous support made our programs and services possible.

\$20,000 & BEYOND

The Grace & Mercy Foundation
Chong Moon Lee

De Martini & Yi, LLP
E. Julia Shin
Goldman Sachs & Co.
Guy L. Chung
Helen Hae Ja Yoon, MD

\$10,000—\$19,999

Helen Song & Lap Chan
Thomas Kahn & Simi Kahn

Kevin D. Kim
Kwanghee Kim & Chin O. Lee
Melissa Ko
National Memorial Chapel, Inc.
NY Hospital Medical Center of Queens
Rosenthal & Rosenthal, Inc.
Skinny LLC
Song Nam & Chang Ho Suk
The Corcoran Group Real Estate

\$5,000—\$9,999

Abigail E. Disney & Pierre N. Hauser
Citi Group
Deutsche Bank Americas Foundation
Dong S. Suh & Yoon Jung Choi
Edward & Sunyoung Chung
Elliot H. Park
Harry & Misook Doolittle
HSBC
John Yoo
JP Morgan, Chase Bank, N.A.
Myung Shin Lee & Wha Sup Chung
NARA Bank
Rockefeller Foundation
Roger C. & Jennifer Park
Ruth Thomas-Suh & Chan W. Suh
Yukyong Kianna Choi

\$1,000—\$2,999

Alpha Electronic Alarm, Inc.
Andrew Chung
Anne C. Mosenthal, MD
Art Chang
Bank Leumi USA
BNB Bank
By Design, LLC
Cadwalader, Wickersham, & Taft, LLP
Community of Korean Women
Mizville, Inc.
CSK Charitable Foundation

\$3,000—\$4,999

Aiyoung Choi & Eugene C. Schwanke
Anne E. Delaney
Cara Marriott
Daniel C. Marriott

Eisun Jeong
Eleanore Kim
Ellen S. Yoon
Ellie Mai
Eun Hee Yi
Goldman, Sachs & Co. Matching

Gift Program
Han Soo Joo
Hee Hang Lee
Hilary Sunghee Seo, Esq.
Hisuh & Jesun Paik
Holy Name Hospital
Hui Chan Joo
Hun H. Chun
Ilhyun Jung D.D.S., P.C.
In Sang Yi
IW Group Inc.
J Group LLC
Selena & Jess Cohn
Jesun Paik
John Kim
Jong B. Lim
Joon Hong
Julia Choi
Jung Hong
Ki Chol Kim
Ki Chul Kim
Kingdon Capital Management LLC
Law Office of Charles C. Khym, P.C.
Lena Shim
Marisa Chearavanont
Milton Waner
Nina's Fur Inc.
Ommawe Inc.
Pacific Transit Services, Inc.
Pine Tree House Inc.
Rockford R. Chun
Sang C. Kang
Seaway International, Inc.
Shin Y. Choi
Soo Kyung Park
Sue E. Cho

Sun S. Oh
Taehong Lee
Thomas J. Crowley
United HealthCare Services, Inc.
Vascular Birthmark Institute of New York
Wells Fargo Insurance Services
WOORI America Bank
Yae Choi
Yang S. & Lena Lee Shim
Yong Nam Jo, MD
Young H. Lim
Yun Yon Kang
Yung Moon
YWCA of Queens

\$999 & BELOW

145 Third Ave. Dry Cleaners, Inc.
Aaron M. Kim
Academic Maxillofacial & Oral Surgery
Ahn Insurance Agency Ltd.
Aija Lee
Alex Park
Alexander H. Mun
American Cancer Society
Amy Ahn
Amy Chu
Amy H.K. Lee
Amy Kang
Amy Kim
Amy Y. Kim
Andrew Alford
Andrew T. Hahn
Ann Kim

Apex Transportation USA, Inc.
Ari Albert
Arlene Lear
Asian American Federation of New York
Asian Pacific American Lawyers Association
AWCA Home Care Agency, Inc.
Barbara Brizzi Wynne
Bengen H. Lee
Bijay Beomjun Kim
Boah Y. Ko
Bok Nan Cha
Bongnam Lee
Bonny & Chris Dahm
Book Changdong Soondubu, Inc.
Brennan Gang
Brigitte Noh
Bryan Ko
Calvin Yee
Carolyn Bella Kim
Centenary College
Central Funeral Home of NY, Inc.
Chan Koo Cho
Chang S. Lee
Chinatown Manpower Project, Inc.
Chong Kong Lee
Chong Pil Kim
Chong Yun Park
Choo Yong Kim
Chorus Music Studio, Inc.
Christina Kang
Christopher Orzolek
CHUBB Insurance
Chungmin Oh
CMB Wireless Group, LLC

Coalition for Asian American Children and Families (CACF)
Comprehensive Family Podiatry, PLLC
Cristobal A. Garcia
D.B. Shin
Daniel H. Park
David Amarel
David D. Choi
David Kiwon Park
David Mark Gaston
David Palmer
Delia Chung
DJ Lee
Dohyung Kim Physical Therapy P.C.
Dong Woo Lee
Dorchen Leidholdt, Esq.
Doukhee Jin
Duk-Ja O
DUO Information, Inc.
E. Julia Shin
E. Vivian Lee
Ebenezer Dental, PLLC
Ed Park
Edward Park
Elegant Dental
Eliot S. Choy
Elizabeth Clardy
Ellen Park
Elm Property Holdings, LLC
Emma Arakelyan
Eng Garcia
Esther M. Lee
Eugene Yoon
Eun Mi Hwang
Eunsook Pai

Florello H.
Frank P. Scibilia
Frederick Jenne
Gene Ko
George Taylor
Gina C. Kim
Gloris, Inc.
Grace Jungsook Yoon
Ha San Song
Hahm Ji Bach Restaurant
Hali Lee
Hayoung Rhee
Hee Jung Kim
Hee-Jun Kim
Hera Kim-Berman
Hodori After-School Parents Association
Hosang Yu
Hunjun Jang
Hwang Yong
Hwi-sook Taylor
Hye Hyung Kim
Hye Jin Chung
Hye Jin Han
Hyo Soon Cha
Hyun Hwa Cha
Hyun Shim
Hyunyiil Cho
Ihryung Rhyee
Injoo Lee
Irene Kim
ITT
Ja Bun Kwak
Jae Lee
Jane Lucas
Jane Shim

Janet Lee Wyche
Janet Noh
Jay Lee
Jay Won Min
Jean Jeremie
Jeannie Park
Jennifer Yoon
Jenny Park
Jewish Communal Fund
Jhoung Sei Chang
Jimmy Yan
Jin "PJ" Kim
Jin Kang
Jin Kim
Jinah Jung
Jinkyu Chang
Jinny Jung
John Bang
John Kwon
John Lee
John Om
John P. Kern
John Pai
Johnny's Fashion Studio, Co.
Jonathan A. Golub
Jong Pil Lee
Jong Uk & Joung Hee Hong
Jong Won Yom
Joon Key Min
Joseph P. Linskey
Judy Kim
Julianne Lee
June Noh
Jung Ka Park
Jung Lee
Jung O. Bond

Justine Hong	Multicultural Radio Broadcasting,	Sun Y. Yu	Yijung Byon
Kang Collection	Inc.	Sung K. Kang	Ying Ling Chen
Kanghan Medical Services, PC	Music Story, Inc.	Sungmin Lee	Yonson Han
Kathy Song	Myong Ok Park	Sungno Yun	Yoon & Kim, LLP
Kathyrn Weill	Myoung H. Lee	Sungsu John Kang	Yoosyun Yun
Kevin K. Lee	Myounga Restaurant, Inc.	Sunny Youn	Young Kil Kim
Kevin McGrath Jr.	Namhee Om	Susan L. Wagner	Young Sook Lee
Kiju Chris Hansen	New York Asian Women's Center,	Susan Lee	Young Tai Choi
Korean American Lawyer	Inc.	Susan Paik	Young Town Corp
Association of Greater NY	Nikhil K. Lele	Susan Son	Young Yim
Korean American Public Affairs	Noah Taylor	Suzanne L. Zimmerman	Young Yun
Committee	Palian Inc. D/B/A McDonald's	Sydney Heakyung Kang	Yung Du
Korean American Women In Need	Patty Mah	Tae J. Kwon	
Korean Community Services of	Pearson	Tae L. Park	
Metropolitan NY	Peter Lee	Taek Sun Han	
KPMG, LLP	Play For Your Cause	Tai H. Park	
Kristen Magnani	Pyong Gap Min	Teresa O	
Kum C. Linksey	Rainbow Center, Inc. of New York	Terry J. Yun	
Kum Ju Song	Rebecca Moran	The Bank of America Foundation	
Kwang Suk Kim	Robert E. Hawks	The Fresh Air Fund	
Kwangsoo Kim	Robert Kim	The Heights Management	
Kyu S. Kim	Robert Lear	Company, LLC	
Kyung H. Lee	Roger Tabchoui	The Korean American Behavioral	
Kyung Tae Sohn	Romina Kim	Health Association	
LaGuardia Community College	Rosa H. Kim	The Korean American Youth	
Lauren U. Y. Lee	Rynag J. Suh	Foundation	
Lawrence Lerner	Samantha Choi	The Lothar Von Ziegesar	
Leah Rice	Sandy Kim	Foundation, Inc.	
Liana S. Yoo	Sang Lee	Thomas J. Toy	
Libert K. Sang	Sarah Yu	Tushinsri O'Connor	
Madeline's Events Corp	Seon Do Jin	Tzu Yun Constance Song	
Manhattan Bridge Orthodontics	Seoung K. Kim	Ungkeun Lee	
Mannar Wong	Seung Min Kwak	United Health Group Match	
Maria Embler	Seungok Jenne	Campaign	
Maria G. Cilenti	Shao Han Lee	United Parcel Service	
Mark Cho	Sheraton LaGuardia East Hotel	Vera Sung	
Marriott International, Inc.	Shinhan Bank America	Victoria C. Chi	
Martin A. Schwartzman	Sonia J Choi	Wan Soo Lee	
Mi Lyung Kim	Sonny Hong	Wang Shin	
Michael Chang	Sooknam Choo	Wendy Y. Hu	
Michael Owh	Soyoung Lee	Wha S. Chung	
Minkwon Center for Community	SSKS NY, Inc.	William Ha	
Action, Inc.	Steve Kang	William Kim	
Miseon C. Suh	Steve Nam	William M. Duke	
Misun Hwang	Suhan Shim	WISH Support Group	
Monica Hyun	Suize Choi	Woon S. Lee	
Morgan Stanley	Sun Chong Kim	Y-H. Lowe Foundation, Inc.	

CIRCLE OF FRIENDS

Cecilia Kang
Chan Koo Cho
Claire Won Y. Kang
Eunsook Pai
Helen Haeja Yoon, MD
Hisuh Paik
Kap Shin Cho
Kyun-Won You
Misook Doolittle
Myung Shin Lee Chung
Simi Kahn
Sung Nam Choi Suk
Susan Lee
Yong Nam Jo, MD
Yoon Jung Choi Suh
Yun Yon Kang
Heather Choi
Karen Choi
Uni Marchese

All gifts to the Korean American Family Service Center make a difference. We apologize if we have omitted any donor or recognized you incorrectly. Please contact us at 718.460.3801 ext. 14 or via email at development@kafsc.org so that we can correct our donor information for future recognition.

FUNDERS OCTOBER 2010 — SEPTEMBER 2011

THE GENEROUS AND CRITICAL SUPPORT WE HAVE RECEIVED FROM FOUNDATIONS, BUSINESSES, AND INDIVIDUALS, AS WELL AS GRANTS FROM STATE AND LOCAL GOVERNMENT AGENCIES, ARE THE LIFEblood THAT CONTINUES TO KEEP US ALIVE.

WITH EACH GIFT AND GRANT, WE RECEIVED NOT ONLY THE VITAL FUNDS TO KEEP OUR WORK GOING, BUT ALSO A STRONG AFFIRMATION OF OUR MISSION, AND WHAT DEFINITELY FEELS LIKE A PERSONAL ENCOURAGEMENT FOR EACH OF US TO KEEP THE FAITH, AND STAY THE COURSE. WE ARE GRATEFUL FOR THE FOLLOWING FUNDERS WHOSE GENEROUS SUPPORT MADE OUR PROGRAMS AND SERVICES POSSIBLE.

PUBLIC SOURCE

U. S. Department of Justice, Office on Violence Against Women
New York State Crime Victims Board
New York State Division of Criminal Justice Services
New York State Office of Children & Family Services
New York City Council Discretionary Fund – DoVE Initiative through Safe Horizon
New York City Department of Youth and Community Development
Korean Consulate General of New York
through Safe Horizon
New York City Department of Youth and Community Department

RELIGIOUS SOURCE

Central Presbyterian Church of NY
Chamsarang Korean Methodist Church
Korean Presbyterian Church of Westchester
New People's Church of New York
The First United Methodist Church in Flushing
The Korean Church of Queens

PRIVATE SOURCE

Asian American Federation – Asian American Community Fund
The Avon Foundation for Women
Beautiful Foundation USA
Chong-Moon Lee Foundation
Coalition for Asian American Children & Families (CACF)
Daphne Foundation
Korean American Community Foundation
Research Foundation of the City University (Asian American Center of Queens College)
Robert Wood Johnson Foundation through the New York Asian Women's Center
The Grace and Mercy Foundation
The Ong Family Foundation

BOARD/STAFF

BOARD OF DIRECTORS

Sarah BJ Sung, *Chair*
Shin Choi, *Vice Chair*
Roger C. Park, *Treasurer*
Ruth Thomas Suh, *Secretary*
Aiyoung Choi, *Chair Emerita*

Ellen H. Blau
Yukyong Kianna Choi, JD
Sandor Hau
Yun Yon Kang
Myung Shin Lee
Yung Moon
Anne C. Mosenthal, MD
So-Chung Shinn Lee
John Yoo
Helen Yoon, MD
Paul Yoon, Esq.

FOUNDER

Kwang Hee Kim

ADVISORY COUNCIL

Shinhee Han, LCSW, PhD
Jong Uk Hong, CPA
Hae Am Kim, MD
Hali Lee, MSW
Hilary Sunghee Seo, Esq.
Kyun Yi, Esq.

ASSOCIATE BOARD

Gina Kang, Co-Chair
Young Yim, Co-Chair
HoJoon Chung
Chris Kiju Hansen
Monica Hyun
Jane Lee
Peter J. Woo, Esq.

EXECUTIVE DIRECTOR

Grace Jungsook Yoon, MA

STAFF

Jihyun June Lyo, MA, *Director of Programs*
Min Um-Mandhyan, MA, *Development Director*
Shao Han Lee*, *Finance & Operations Manager*
Joe Advek, *AmeriCorp Development Associate*
Finella Murphy, JD, *AmeriCorp Communication Associate*

Hee Ok Kim, LMSW (NY)/ LCSW (CA), *Senior Social Worker*
Hellen Kim, *Community Relations Coordinator*
Mi Jung You, LMHC, *Hodori Program Manager & Mental Health Counselor*
Jiyeon Lee, LMSW, *Housing Social Worker*
Jeehae Lee, MA, *Self-Sufficiency Program Coordinator*
Hyun Hwa Cha, MSW, *Early Intervention Social Worker*
Michelle Meehae Chu, *Counselor*

Julie Yoo*, MA, *Hodori After-School Teacher*
Jae Smith*, MA, *Hodori After-School Teacher*
Hannah Kim*, *Hodori After-School Teacher*
Stephanie Lim*, *Hodori After-School Teacher*
Jeehee Lee, *Hodori Children Counselor*

HODORI TEACHER ASSISTANTS & SPECIAL ACTIVITY INSTRUCTORS*
Stella Hong, Yenny Lee, Katie Lee, Richard Jang, Matthew Cotto-Frias, Emily Cross, Kyung Soo Kim

Hyejin Han, *Volunteer Group HARMONY President*
Jungsook Kang, *Receptionist & Office Assistant*
Kisoo Park, *Fresh Air Fund Intern*
Min-Seok David Yoon, *International Intern from University of Seoul*

* Part-time Staff

VOLUNTEERS

EVERY DAY AND IN EVERY WAY, THE PERSONAL INVOLVEMENT OF OUR VOLUNTEERS – THEIR UNDERSTANDING, ENTHUSIASM, AND SUPPORT – PROVIDES THE KAFSC WITH IMMENSE STRENGTH AND INSPIRATION. THEY ARE TRULY THE UNSUNG HEROES OF OUR SUCCESS. WE WANT TO THANK ALL OUR DEDICATED VOLUNTEERS WHO HAVE GIVEN THEIR TALENTS, SKILLS, AND COUNTLESS HOURS TO MAKE OUR PROGRAMS AND SERVICES POSSIBLE.

24-HR BILINGUAL HOTLINE

Boyoung Yang
Chungwon Lee
Clara Lee
Euisook Lee
Eulhyang Hyun
Eunhwa Lee
Eunmi Hwang
Grace Im
Guk Hee Kim
Gumja Chu
Gyoungok Park
Hae Harpaz
Haesook Lim
Hanna Chung
Heiok Ra
Hongsun Yoo
Hwaja Kim
Hyejin Jasmine Han
Hyeseon Jeong
Hyosin Kim
Hyungran Chun
Inkyung Kang
Jeanie Chang
Jongwon Hong
Julie Kim
JungHee Baik
Jungsook Kang
Jungsook Kim
Kwangsook Min
Kyoungsook Kwak
Lilian Cho
Maryan Park
Miran Kim
Miri Joo
Sangmi Kim
Sara Jang
Seolhee Park

Shon Yum
Sookyung Park
Soonok Yoo
Sucheng Park
Sujung Kang
Sung Rah
Sungmin Lee
SunYoung An
Un Jee Jung
Yonghui Kim
Younghyun Kim
Youngmi Yi
Youngsook Yoon
Yunsook Kwon

UNNI-HYUNG PROGRAM MENTORS

Alice Lee
Christine Park
Daniel Kim
Gina Kang
Grace Yang
Helen Kim
Hojoon Chung
Jeanette Kang
Jihea Park
Jin Kang
Jun Park
Monica Hyun
Tiffany Chen

YCPT VOLUNTEERS

Jane Lee
An Hyun Cho
Young Yim

HODORI AFTER-SCHOOL PROGRAM

Christine Colligan
Christopher Nam
Kyungsook Kim
Selena Cohn
Seong Sook Choi

WISH SUPPORT GROUP

Karen Ahn
Susan (Sung Jae) Na

SELF-SUFFICIENCY CLASS INSTRUCTORS

Abigail Kirchman
Keith Hough
Martha (Jongwon) Hong
Min C. Chang
Sungmin Lee

PHOTOGRAPHER/ VIDEOGRAPHER

Do Kwon
Eric Lee
Shan Han Lee
Yeong Lim

GRAPHIC DESIGNER

Daisy Kim
Eunman Kim
Carly Mondaro

MEN ALLIES GROUP

David Kiwon Park
J.D. Kim

TRANSPORTATION

David Kiwon Park

PR/MARKETING

Rosa Chang

New York Hospital Queens Congratulates

The
Korean-American Family Service Center
On Their 23rd Anniversary Benefit Gala:
Raising Hope - Transforming Lives
May 11, 2012


Keynote Speaker
Ms. Amy Chua, Esq.
Yale Law Professor & Author of
"The Battle Hymn of Tiger Mother"

Honoree:
Circle of Friends


Stephen S. Mills
President and Chief Executive Officer

56-45 Main Street
Flushing, NY 11355
718-670-2000

nyhq.org


George F. Heinrich, M.D.
Chairman, Board of Trustees

Expertise you trust.
Service you deserve.

New
York
Hospital
Queens



Member
NewYork-Presbyterian Healthcare System
Affiliate: Weill Medical College of Cornell University

© 2008 New York Hospital Queens



Prompt, Reliable & Accurate Service

Congratulations to the **Korean American Family Service Center**
on holding their 23rd Annual Benefit Gala.

Changing lives and promoting healthy relationships for Korean-Americans
through communication, education, and counseling.
Lincoln Land Services is proud to support the KAFSC in their efforts.

RICHARD SONG
ACCOUNT EXECUTIVE
317 MADISON AVENUE – SUITE 508
NEW YORK, NEW YORK 10017
RSONG@LINCOLNLANDSERVICES.COM
WWW.LINCOLNLANDSERVICES.COM

이민법의 새로운 판례와 흐름을 만드는 이민법 전문 김광수 변호사.
모든 이민법 관련 업무 막강한 실력과 열정으로
여러분을 지키고 정의를 지향하는 변호사가 되겠습니다!

Super Lawyers 김광수 변호사
 RISING STARS 2011 "Super Lawyers is a registered trademark of Thomson Reuters."

뛰어난 변호업무

뉴욕주 변호사중 2.5%만이 수퍼변호사 떠오르는 별로 선정됩니다.

"김광수 변호사는 좋은 이민전문변호사의 모든 근성과 자질을 갖추고 있다."
미국이민법의 대부 아이라 커즈반 변호사 뉴욕타임즈 뉴스와의인터뷰에서

"He has all the makings of a good immigration lawyer - empathy, hard work and a genuine interest in the field."
by J. Kuzubon, quoted in the New York Daily News, commenting on David K. S. Kim

톰슨로이터사(Thomson Reuters) 수퍼변호사 매거진(Super Lawyers Magazine)에 2011년 뉴욕 수퍼변호사 떠오르는 별 (2011 New York Metro Super Lawyers Rising Stars)로 선정 (뉴욕주 전체 변호사의 2.5%)



김광수 변호사(David K. S. Kim)는 뉴욕주 플러싱에 소재한 김광수변호사 법률사무소(Law Office of David K. S. Kim, PC)의 창립자이며 대표 변호사이다. 김변호사는 복잡한 이민법 케이스, 추방방어, 연방법원소송등 이민법과 연관된 모든 업무를 담당하고 있다. 그는 개인부터 다국적 기업까지 다양한 의뢰인을 대변하여 추방방어, 이민 및 비이민 비자, 이민세관신청과 관련 정부의 불공평한 판결에 대한 연방법원 소송등 전반적인 이민법관련 법률서비스를 제공하고 있다. 많은 이민변호사와 형사법,상업등 다른 법률분야 변호사들은 가장 복잡한 이민케이스를 담당할 수 있는 김변호사의 전문성과 실력때문에 김변호사에게 의뢰인들을 소개한다.

김변호사는 미 전국을 걸쳐 이민행정기관과 연방지방법원 및 연방항소법원에서 수백건의 소송을 승소했다. 그는 미 전국에 영향을 줄수있는 수건의 연방항소법원 판례를 이끌어냈다. 이 판례들은 뉴욕법률저널에 톱 기사로 게재됐다. 그는 미국이민변호사협회의 활동적인 회원이며 뉴욕지부 연방법원소송위원회 공동위원장 (2007-10)과 법무부 산하 이민심사위원회 전국위원 (2008-10)을 역임했다. 김변호사는 변호사교육위원회에 이민법강사로 자주 초빙되어 활동하고 있으며 미국이민변호사 협회 책자에 실린 이민법에 관한 수가지의 전문기사를 저술했다.

• 수백건의 이민국 관련 신청 추방재판과 이민국을 상대로한 연방법원소송 경력을 통해 새로운 연방법원 판례와 판결들을 이끌어냄

Sharkey v. Quarantillo, 541 F.3d 75 (2d Cir. 2008) (규정에 명시된 법적 절차를 따르지 않고 영주권 승인을 취소한 행위는 위법. 위헌이라는 새로운 판례를 끌어냄);
Shi Jie Ge v. Holder, 588 F.3d 90 (2d Cir. 2009) (외국에서 반정부 활동을 할 경우 허용되는 망명에 관한 해당법원의 불리한 규정해석을 반박시키는 새로운 판례를 끌어냄);
Galluzzo v. Holder, 633 F.3d 111 (2d Cir. 2011) (2d Cir. 2011) (무이자 입국자판 이유인으로 추방재판 없이 추방추방 판결을 내린 이민국의 행위는 위헌이라는 판례를 끌어냄);
An v. United States, No. 009-3184P (W.D. Wash. 2004) (이민국을 상대로 EB-5 투자이민 조건부 영주권 조건해제 신청서 상사기존의 위법,위헌성 주장 집단소송 승소);
Cevallos-Gomez v. Ashcroft, No. 04-23210-CV (S.D. FL 2004) (이민국 수감자 복직신청을 불법적으로 기각한 이민법원 판결의 위법,위헌 소송 승소)

• 뉴욕주 변호사연방법원 변호사 (연방 대법원 제 2, 3, 9, 11 순회 연방 항소법원, 뉴욕남부,동부 지방법원)

• 미 이민 변호사 협회 정회원 (AILA) 변호사 교육 세미나 호칭강사, 뉴욕지부 연방법원 소송 위원회 공동 위원장, 법무성 산하 이민법 심사국 위원회 전국위원 역임)

• 브랜즈 앤드 코번 합동 법률 사무소 파트너 변호사 (Senior Associates, Brink & Covert, LLP, New York City)

• 미국 이민법의 대부 아이라 커즈반 변호사 (Ira J. Kuzubon) 법률사무소 소속 변호사 (Kuzubon, Kuzubon, Weinger & Tetsui, PA, Miami)

• 제 2 순회 연방 항소법원 (연하원) 법원 판사 (Self Attorney Law Clerk, U.S. Court of Appeals for the Second Circuit)

• 에모리 대학 물리학과 학사 (Emory University, B.A. in Physics and Philosophy) 김리교 장학생

• 웨스트 버지니아 대학 행정대학원 행정학 석사 (West Virginia University, MPA) 전역 장학생, 문리대학 최고 조교생 수상(Full Scholarship, HENF Merit Scholar, Teaching Assistant of the Year Award)

• 브루클린 로스쿨 법학박사 (Brooklyn Law School, J.D.) 법과 정책 저널 편집위원 (Articles Editor, Journal of Law and Policy)

• 미 전국 토머스 링 연방항소법원 판사제 모의법정대회 최고 변호사상, 동북부 결선 2 위 (Best Brief and Second Place, Thomas Ting National Mock Court Competition, Northeast Regional)



LAW OFFICE OF DAVID K.S. KIM, P.C.

154-06 Northern Blvd., Suite 2G, Flushing, New York 11354 / kim@dkskimlaw.com

Tel: (718) 321-1557 Fax: (718) 321-1992 www.dkskimlaw.com

“Congratulations to KAFSC on its 23rd anniversary”

진 고 개 잔 치 집

JINGOGAE CATERING

누구의 입맛에도 잘 맞는 맛있는 잔치음식!
 일급 CATERING 서비스 수준의 깔끔한 잔치음식!
 넉넉하고 인심 좋은 푸짐한 잔치음식!

248 BROAD AVENUE, PALISADES PARK, NJ 07650
 TEL. 202-944-8445 | FAX. 201-944-0681



뉴욕가정상담소

“뉴욕가정상담소 창립 23주년을 진심으로 축하드리고 앞으로도 계속 한인 가정과 동포 사회를 위해서 힘써주시길 기원합니다.”

김기철 회장 및 의원 일동
민주평화통일자문회의의 뉴욕협의회

Discover the Difference of Coverage Made Simple...
for All of Your BUSINESS and PERSONAL Insurance

MS Risk Solutions
Call for an Evaluation and
Coverage Recommendations

**PROFESSIONAL
INSURANCE
AGENT**



뉴욕 가정상담소
창립 23주년을 축하합니다.



9W 32nd Street (bt 5th Ave & Broadway), New York, NY10001
Tel. 212-216-9487 | Fax 212-216-9074 | www.kunjip.com | info@kunjip.net



확장
이전

아프면 생각나는 병원

염카이로통증병원

교통사고 통증 · 후유증 전문

사고 후 치료 효과 없으신 분
사고 후 치료받지 못 하신 분

교통사고 일류변호사 무료상담

두 통

목 통 증

어깨 통 증

요 통

좌골신경통

디스크질환

무릎 통 증

수술후 재활치료

메디케어
아메리그룹

- Empire BlueCross
- Oxford
- Aetna
- 유학생 / 여행자 보험
- 워커스 컴
- CIGNA
- 1199
- HealthNet
- United Health Care
- GHI



염 종 원

카이로프라틱 닥터, 한의사, 약사,
영양학 석사

UBCC 카이로대학 수석졸업
뉴욕주 카이로프랙틱 면허
UBCC 임상영양학 석사
SOUTH BAYLO 한의대 졸업
뉴욕, 캘리포니아 및 연방 침구사 면허
성균관 대학교 약학과 졸업
대한민국 및 캘리포니아 약사 면허

[전문의료진]

김도형 물리치료사
주성준 물리치료사
박세중 물리치료사
Karen Han 마사지테라피스트
Dr. Marc Rosenblatt M.D. 재활의학과
Richard M. Seldes, M.D. 정형외과
강창홍 M.D. 재활의학과

염카이로통증병원
Murry Hill Therapeutics
www.yomchiro.com

718.888.1641
153-01 Northern Blvd, 2FL.
Flushing, NY 11354

지하 주차장 완비



*Congratulations to KAFSC
on its 23rd Anniversary!*

John Yoo & Minsun Kim

이창석 내과
CHANG SUK LEE, M.D.
DIPLOMATE, AMERICAN BOARD OF INTERNAL MEDICINE

*“Congratulations to **KAFSC** on
its 23rd Anniversary”*

HOURS BY APPOINTMENT

38-05 Bowne Street, Flushing, NY 11354
Tel.(718) 762-4400
Fax.(718) 463-2074

PARK & JENSEN LLP
IS PROUD TO
SUPPORT THE WORK
OF KAFSC

PARK & JENSEN LLP | | WWW.PARKJENSEN.COM



KALAGNY is proud to support

Korean American Family Service Center's
23rd Annual Benefit Gala
and its commitment to
“Raising Hope...Transforming Lives”

Join us at www.kalagny.org



Why buy from us?

FULLY STOCKED INVENTORY

QUALITY SERVICE

UNBEATABLE PRICING

www.grantep.com

Long Island City, NY
39-15 21st Street
Long Island City, NY 11101
TEL: 718-729-2373
FAX: 718-361-6574

South Hackensack, NJ
630 Huyler Street
S. Hackensack, NJ 07606
TEL: 201-994-0001
FAX: 201-994-0003

Belleville, NJ
559 Washington Avenue
Belleville, NJ 07109
TEL: 973-759-3637
FAX: 973-759-4242



뉴욕가정상담소 창립 23주년을 축하합니다.

호돌이 방과후 학교에서 우리 아이들이 건강하고
바르게 성장할 수 있도록 도와주셔서
항상 감사드립니다.

THANK YOU, KAFSC!

호돌이 방과후 학교 학부모 모임 드림
Hodori After-school Parents Group



SIMPLIFY YOUR MEDICARE CHOICES

With a variety of products to choose from, selecting a Medicare plan can be confusing. We take the confusion out of the equation and help you choose the best plan for you.

Don't wait! Open enrollment is here! It's time to make a decision on your Medicare benefits!

For more information on how we can help you with your Medicare benefits, call us at 1-877-212-4358 or visit us on the web at www.isibenefits.com.





*“Orsyn Abstracts is
a proud supporter of KAFSC!”*

42-40 Bell Blvd, Suite 400
Bayside, NY 11361
(P) 718.423.2500
(F) 718.423.8200

NEW YORK

NEW JERSEY



CORCORAN SUNSHINE MARKETING GROUP
SALUTES THE KOREAN AMERICAN FAMILY SERVICE CENTER
ON 23 YEARS OF RAISING HOPE
AND TRANSFORMING LIVES

corcoransunshine.com

Corcoran Sunshine, the new development market leader,
represents New York's most desirable new condominiums.



뉴욕가정상담소 창립 23주년 행사를 진심
으로 축하드립니다.

CONGRATULATIONS &
OUR HEARTFELT THANKS TO KAFSC!

자원봉사자 24기 일동



Kissena Location
41-01 Kissena Blvd.
Flushing, NY 11355
(Front of Main St. Queens Library)
718-321-1212

Union St. Location
38-11 Union St.
Flushing, NY 11354
(Front of Municipal Parking)
718-358-9595



강한가족의료원 · 뉴욕여행자건강클리닉
Kanghan Family Health Center
New York Traveler's Health Clinic

내과, 소아과, 부인과,
여행자 예방접종, 발병원

38-34 Parsons Blvd. Suite 1A, Flushing, NY 11354
Tel. 718-762-3240 Fax. 718-732-3039
E-mail: kanghanclic@yahoo.com

TELEPHONE (718) 229-9010

FAX (718) 229-8975

HERA KIM-BERMAN, D.D.S., M.M.Sc., L.L.C.
DIPLOMATE, AMERICAN BOARD OF ORTHODONTICS
32-06 BELL BOULEVARD
BAYSIDE, NY 11361-1059



PRACTICE BY APPOINTMENT
LIMITED TO ORTHODONTICS
FOR CHILDREN AND ADULTS

Flushing Bank
is a Proud Supporter of the

**Korean American
Family Service Center**



www.FlushingBank.com 800.581.2889

Flushing Bank is a trade name of Flushing Savings Bank, FSB.



**Congratulations &
Good Luck!**

From McDonald's
Restaurants
On Main & Roosevelt

McDonald's
40-18 Main Street
Flushing, NY 11354

McDonald's
136-61 Roosevelt
Flushing, NY 11355

명함 / 전단지 / 포스터 / 책 / 포스트카드 / 봉투 / 스티커 / 메뉴 / 배너
사업성공의 파트너 ●●●● 스피디 인쇄

코팅명함 당일출고

스피디인쇄
SPEEDY PRINTING
www.NYSPEEDY.com

- 당일출고 One-Day Service (web Design File)
- 저렴한 가격 Low Price
- 좋은 품질 High Quality
- 최신 설비 New Equipment



41-11 162nd St. Flushing, NY 11358
Tel. 718.463.3000 / Fax. 718.463.3200
Email. best@nyspeedy.com



건강하고 행복한 한인 사회를 위해
불철 주야 노력하는 뉴욕가정상담소에
진심으로 감사드립니다.
뒤에서 수많은 사람들이
응원하고 있음을 잊지 마시고,
상담소 아자아자!!!

THANK YOU AND ALL THE BEST,



하모니 총회 및 자원봉사자들 일동
KAFSC "HARMONY"
Volunteer Group

“함지박 식당이 뉴욕가정상담소
창립 23주년을 경축드립니다.”

Cell: 646-610-2622

함 지 박
Hahn Ji Bach Korean Restaurant

Young Hwan Kim

41-08 149th Place
Flushing, NY 11355

Tel: 718-460-9289

Congratulations on
Korean American Service Center's
23rd Annual Benefit Gala

뉴욕가정상담소 창립 23주년
기금모금 만찬을 축하드립니다.

Korean American Women in Need (KAN-WIN) is a non-profit
organization that provides services to Asian American women
and children victims of domestic violence and sexual assault
in the chicanoland area.

Proskauer is proud to sponsor the

Korean American Family Service Center

on the occasion of its 23rd Annual Benefit Gala

John P. Barry
973.274.6081 | jbarry@proskauer.com

www.proskauer.com

Beijing | Boca Raton | Boston | Chicago | Hong Kong | London | Los Angeles | New Orleans | New York | Newark | Paris | São Paulo | Washington, DC
Proskauer Rose LLP | Eleven Times Square, New York, NY 10036-8299 | 212.969.3000 | Attorney Advertising

Proskauer

MINKWON CENTER
For Community Action

Congratulations to KAFSC on
23 years of service to the community!
The Minkwon Center For Community Action
looks forward to working together
with KAFSC on
“Raising Hope & Transforming Lives”
in 2012 and beyond.

WINC
Women In Need Center

무지개의 집
W.I.N.C | WOMEN IN NEED CENTER
P.O. Box 540929, Flushing, NY 11354

Community-Based Emergency Shelter
For Asian women in the greater NY Metropolitan Area

Office: 718-539-6546/5515
Crisis Phone Counseling: 1-800-539-5007
Fax: 718-539-6547
Email: info@wincny.org

WHITESTONE AUTO CENTER, INC.
SERVICE STATION - EXPRESS LUBE - AUTO REPAIR - CONVENIENCE STORE
BRAKES - TIRES - TUNE UP'S - OIL CHANGES

SUNOCO

150-65 CROSS ISLAND PARKWAY
WHITESTONE, N.Y. 11357
PHONE (718) 767-3400
FAX (718) 767-1440
MANAGER: LOUIE ROMANO

WHITESTONE CAR WASH
AUTO DETAILING - HAND WASH - AUTO ACCESSORIES

150-55 CROSS ISLAND PARKWAY WHITESTONE, NY 11357
PHONE (718) 767-3400 FAX (718) 767-1440
LOUIE ROMANO - GENERAL MANAGER

이완수 소아과
Wan Soo Lee, M.D., R. Ph
Children & Adolescent Medicine

Tel. 718-961-6222
144-31 41st Ave., Suite #L8,
Flushing, NY 11355

축하합니다

**KAFSC 23rd Annual
Benefit Gala**



CONGRATULATIONS!

All of us at KOWIN New York Chapter salute the ***Korean American Family Service Center*** for your dedication to raising hope and transforming the lives of women and families in New York.

“Congratulations to **KAFSC**
on its 23rd Anniversary”



JASON J. HONG | TEL: 212.736.2140
Licensed Broker | FAX: 212.268.0652
EMAIL: ahninsurance@gmail.com



DR. DAVID INGOOK CHUNG, MD
CHILD HEALTH 및 각종 보험 취급

신생아에서 대학생까지 진료 상담
각종 예방접종
취약 상담 및 학교서류
알레르기, 임진료

TEL. (718) 961-2600 / (718) 445-5900
37-28 PARSONS BLVD, FLUSHING, NY 11354
FAX (718) 981-7259



OPEN 24 HRS.

152-22 Northern Blvd., Flushing, NY 11354
T. 718.961.2001 / F. 718.961.2011

GRS TAX ASSOCIATES GROUP, LLC

AUSTIN SONG

Managing Director / Former IRS Agent

www.TaxSmarter.com
AustinSong@TaxSmarter.com

NY 1515 Broadway, 11 FL, NY, NY 10036 T. 917.338.7258 Fax. 928.832.7258
NJ 20013 Lemoine Avenue, Fort Lee, NJ 07024 T. 201.398.3798 Fax. 201.461.4144

사고상해
교통사고, 의료사고, 건축, 화재, 각종 상해, 사고 전담

유능하고 힘있는 김광수 변호사

NY/NJ 24시간 무료상담 KWANGSOO KIM, ESQ.

한인사회에서 17년간 흘린 땀방울로 신뢰와 믿음, 책임감을 만들었습니다.

김광수 변호사와 50년 경력의 Smiley & Smiley Law Firm이 최대보상을 약속 드립니다.

- \$1천만불 이상을 승소(교통사고)
- \$3백5십만불(소형화물)
- \$8백만불 합의(11대차 부상)
- \$5백만불(버스사고)
- \$5백만불 제판 승소(각종 상해)
- \$2백2십5만불 합의(의료사고)
- \$3백5십만불(지하철사고)
- \$4백만불(건설현장 사고)

24시간 전호연락: (718) 877-5516 사무실: (718) 762-1111
163-10 Northern Blvd., #202 Flushing, NY 11358/ FAX: (718) 762-1110

YOUNGSOL CORPORATION

Laundry Palace
280 BURNSIDE AVE LAWRENCE, NY 11559

IN-SANG JI (President)
TEL. 516. 239. 3234

LAW OFFICE OF M. DANIEL BACH

“Congratulations to **KAFSC**”
from the Law Office of M. Daniel Bach.

Focusing on Real Estate, Wills, Litigation, Landlord/
Tenant, Criminal, Matrimonial and Personal Injury.

38 WEST 32ND ST., SUITE 1110
NY, NY 10001

TEL: 917 699 7193
FAX: 866 535 1118

E-MAIL: MDANIEL@BACHLAWYER.COM
WWW.BACHLAWYER.COM

PACIFIC TRANSIT SERVICES INC.

International Freight Forwarder & Customs Broker

BILLY JEON / MANAGER

Sales Executive
Licensed Customs Broker

NEW YORK OFFICE

420 DOUGHTY BLVD., 2ND FLOOR
INWOOD, NY 11096

TEL: 516-881-2020 X.107

FAX: 516-881-2030

CEL: 718-308-6479

EMAIL: BILLY@PTSTFS.COM

BBCNbank.com

THE COLORS OF A NEW BEGINNING

Nara Bank has been reborn as **BBCN** opening up new possibilities.

We are now able to serve you with 44 branches nationwide in Los Angeles, San Francisco, New York, New Jersey, Chicago and Seattle.

Because of your support, we are the largest Korean community bank offering bigger possibilities and premium banking service.

Together, there is no limit to the dreams we can achieve.



The New Name of Nara Bank and Center Bank

  BBCN is a SBA Preferred Lender.

MOVE FORWARD™

SALES | RENTALS | RESIDENTIAL | COMMERCIAL | NEW DEVELOPMENT | CORPORATE RELOCATION

BOND

LICENSED REAL ESTATE BROKER

Yukyong “Kianna” Choi, J.D.
Associate Broker
Vice President
25 Hudson
New York, NY 10013

kianna@bondnewyork.com

WWW.BONDNEWYORK.COM

