



CONTENTS

LETTER FROM THE EXECUTIVE DIRECTOR

PROGRAM HIGHLIGHTS

VOLUNTEER HIGHLIGHT

CLIENT STORY

2015 STATISTICS

FY2015 FINANCIAL REPORT

FY2015 INSTITUTIONAL FUNDERS

FY2015 INDIVIDUAL & BUSINESS DONORS

FY2015 VOLUNTEERS

BOARD OF DIRECTORS

STAFF & ADVISORS



THE HODORI
AFTERSCHOOL
PROGRAM SERVED

349

LOW-INCOME
ELEMENTARY AND
MIDDLE SCHOOL
YOUTH.

66

clients received individualized
job counseling through the
Self-Sufficiency Program.

1,273 BED NIGHTS
WERE PROVIDED TO 28 CLIENTS AT
RAINBOW HOUSE SHELTER.

71

high school students were trained
and empowered to address domestic
violence and sexual assault through
the Youth Community Project Team
(YCPT) advocate-raising program.

676

individual student
counseling sessions were
provided through the
Hodori afterschool.

2,785
HOTLINE
CALLS WERE
ANSWERED.

82%

of graduates of the
Transitional Housing
program secured and
sustained employment.

KAFSC'S IMPACT IN
2015

Rainbow House
shelter alone provided
a total of

475
IN-PERSON
counseling sessions.

The Transitional
Housing program
enabled

11

families fleeing
violence to have
warm homes and
rental assistance.

42

WOMEN WERE
SERVED IN IN-
HOUSE LEGAL
CLINICS.

1280

hours of job skills training
instruction were provided.

Trained
Volunteers
provided
6,736 hours
answering
the 24-hour
bilingual
crisis hotline.

72.4%

OF HOTLINE CALLS WERE RELATED TO
DOMESTIC VIOLENCE AND SEXUAL ASSAULT.

1816

in-person counseling sessions were
provided to 869 clients.

WELCOME

DEAR KAFSC FAMILY AND SUPPORTERS,

We are thrilled to celebrate our 27th Annual Benefit Gala and share our year long journey with you.

The numbers in this annual report are testimony of the many lives affected by violence in the Korean and Asian immigrant community.

For clients transitioning from crisis to safety, there are numerous barriers—each more complex than the next: the fear of going against the cultural norm of keeping private affairs private, the shame of failing to uphold the sanctity of marriage, the confusion of confronting homelessness, and separation from their children, the ordeal of complicated court processes with limited English, and often no legal status; and the sudden financial responsibility of becoming the head of household with no job.

At the Korean American Family Service Center, we seek to address each of these barriers by providing 360 degree services. We would not be able to provide the breadth of services without the support and involvement of individuals like you. Thank you for your support and providing hope to the families behind the numbers in these pages.

With gratitude,



BOMSINAE KIM
Executive Director



PHOTO BY DON HWANG/OLI STUDIO

KAFSC PROGRAM HIGHLIGHTS

KAFSC OFFERS A BROAD RANGE OF PROGRAMS AND SERVICES FOR WOMEN, MEN, CHILDREN AND YOUTH IN THE TRI-STATE AREA (NY-NJ-CT).

Most programs are free or offered at a minimal cost, thanks to the generous support of grants and funding from private, corporate and government resources. All of our bilingual counselors have a Master's degree in social work, counseling or mental health. All cases are kept strictly confidential, and we retain the right to their privacy except as required by law.

As of March 2016, we are thrilled to now offer direct services via a Manhattan office along with our regular Queens-based location. All appointments can be made by calling the 24-hour bilingual crisis hotline (718) 460-3800.

ADULT PROGRAMS

24-hour Crisis Hotline 718-460-3800

Operating around the clock, seven days a week, our bilingual hotline offers crisis intervention, safety planning and emergency shelter placement to victims of domestic violence, sexual assault or other personal crises. It also provides information, referral and advocacy. On average, KAFSC receives and responds to 200-220 hotline calls each month.

Individual & Family Counseling
KAFSC's core program is crisis intervention and counseling on

a short-term or long-term basis, available to all clients regardless of their background. We offer one-on-one sessions or integrated sessions, which include other family members. Counselors help address a variety of problems involving a broad range of factors, including emotional distress, depression, isolation, conflict, fear and anger, which are often triggered by domestic violence, sexual assault, child abuse or other personal or family crisis. Additionally, counselors frequently provide support on issues such as divorce, parenting, discipline, inter-generational conflict, poverty, crime, addiction and bereavement. We provided 3,758 units of domestic violence and sexual assault-related counseling and 548 units of non-domestic violence counseling in 2015 alone.

Rainbow House Emergency Shelter

Following an unprecedented merger with Rainbow Center of New York (a/k/a Women In Need Center) in January 2014, KAFSC now offers Rainbow House—a shelter providing immediate physical safety, Korean food, counseling and a Social Worker and staff that are bilingual—all of which help lessen language and cultural barriers by victims of violence. More than half of those admitted into the shelter are domestic violence victims holding neither permanent residency nor U.S. citizenship. The shelter provides an important, healing bridge between immediate crisis and long-term safety and self-sufficiency by connecting individuals to important services



**IF YOU KNOW SOMEONE
IN NEED OF HELP, CALL
OUR HOTLINE AT:
718-460-3800**

Operating around the clock, seven days a week, our bilingual hotline offers crisis intervention, safety planning and emergency shelter placement to victims of domestic violence, sexual assault, or other personal crises. It also provides information, referral and advocacy.

such as counseling, support groups and job-training classes

Transitional Housing Program

In 2009, KAFSC became one of 58 national agencies to receive \$250,000 from the U.S. Department of Justice, which was used to launch the Queens Immigrant Transitional Housing Program. This Program is the first and only one of its kind in New York for Korean and Asian American women. By providing culturally sensitive and safe housing and support services, we provide victims and their children with critical time and means to realize a stable family structure and put them back on the path to physical, emotional and financial independence. Currently, our seven (7) Transitional Housing units house 7 families and 15 individuals. We are proud that our first federal grant was renewed in October 2012 for another three (3) years!

Legal & Social Service Advocacy

Domestic violence and sexual abuse survivors learn of their legal rights and options through KAFSC's free Monthly Legal Clinics and one-on-one consultations provided by attorneys from partner agencies such as Sanctuary for Families, Her Justice (formerly InMotion) and Queens Legal Services. We provide other support including

emergency cash funds, help to access health care and other public benefits, as well as court advocacy and interpretation for orders of protection, child custody and other legal rights.

Women's Support Group (WISH) & Children's Support Group

Women with Independence, Support and Hope (WISH), formerly called "Ottuki Club," was launched in 2003 for domestic violence survivors and/or single mothers, to help them gain self-awareness, confidence and self-reliance. Through a variety of art therapy and culturally appropriate group activities, members learn self-expression, communication skills, parenting, stress release, conflict resolution, and self-care. They initially meet weekly for eight (8) weeks to share experiences in a creative, safe, non-judgmental environment, and then once-per-month for continued peer support. Our staff provides guidance, encouragement and resources. During the women's support group, their children also participate in their own support group activities, facilitated by our social workers. Topics for children include anti-bullying, healthy relationships, self-expression and more.

Sexual Assault Intervention

KAFSC is the only organization in the Tri-state Korean community to offer assistance specifically to sexual assault and rape victims. We provide crisis intervention, counseling, court advocacy and support services to women and girls who have been victimized. Like domestic violence, these issues impact women of all ages and socio-economic status; thus, KAFSC continues its extensive education and outreach via public service announcements, youth mobilizing and education. In 2014, KAFSC held its first Sexual Assault Awareness and Victim's Rights Rally in front of Queens Borough Hall.

Self-Sufficiency Program

Job readiness skills are provided to clients so they can gain self-confidence, basic skills and economic self-sufficiency. We provide basic to advanced ESOL (English for Speakers of Other Languages), computer, sewing and QuickBooks classes taught by teachers funded through grants as well as experienced volunteers. We also offer individual tutorial sessions, and conduct periodic workshops on financial literacy, covering banking, credit, debt, taxes, saving and financial planning. Furthermore, we offer job referrals for clients who are ready to seek

employment as well as monthly job interview clinics to help women with resumes, cover letters, interview skills, job applications and scholarship applications.

Parenting Counseling & Education

Our Parenting Education Program is designed to provide culturally sensitive child abuse and neglect prevention education to parents in the Korean community, as well as to help parents understand and enhance communication and healthy relationships with their children. The curriculum fulfills mandatory or recommended parenting education requirements by the Administration for Children's Services (ACS), and comprises a set of eight weekly private sessions. There is a nominal fee for parents required to attend by ACS to ensure compliance.

Information & Referral

KAFSC handles requests for information beyond our own programs and services, such as access to entitlements, child care, elder care, housing, immigration and naturalization, and how to navigate the complex systems of the city's public schools and social service agencies. We provide referrals to bilingual attorneys, shelters, medical and other social services - and when necessary, provide accompaniment to services and interpretation.

CHILDREN & YOUTH PROGRAMS

Hodori After-School Program for Elementary and Middle School Students

Based on New York City's development framework, the year-round Hodori ("Little Tigers") Program helps children ages 6 to 14, all from low-income, immigrant and working families. The children build self-esteem and improve communication and social skills by engaging in a mix of therapeutic, creative and academic activities that are culturally relevant and developmentally appropriate. Children meet three hours after school every day when school is in session, and for full days during the summer. Where applicable, children receive individual counseling on a short- or long-term basis, and we encourage Hodori parents to interact with our staff regularly. In mid-2012, Hodori adopted a sliding-scale fee-based program to meet demand due to government funding cuts. We hope to return to a free-of-charge program in the future. In September 2014, through DYCD funding, we were able to add a second site to serve middle school students in one of the highest areas of poverty in Queens.

Youth Community Project Team (YCPT)

YCPT is led and operated by a group of local high school students dedicated to creating positive changes in the Korean American community. Through weekly discussions and analyses of the community's needs, these young volunteers learn about social justice advocacy and hone leadership skills while forming their identities as individual agents of change. In 2014, YCPT expanded community awareness through writing and performing a second original play called "Love Isn't Always on Time" at Flushing Town Hall about barriers faced by victims of domestic violence.

Unni-Hyung Mentoring Program

KAFSC's "Big Sister-Big Brother" program matches clients ages 10-18 with an adult, typically a young professional or older college student, who provides friendship and guidance. We match youngsters with caring individuals who serve as both friend and role model through our careful recruitment and screening of potential mentors. These positive relationships enable the mentors to help their little brothers and sisters to broaden their interests, cope with identity issues, improve self-esteem and develop school and career goals.

COMMUNITY OUTREACH & EDUCATION

Volunteer Training

A bi-annual five-week, once-a-week intensive training course prepares bilingual volunteers to work on the 24-hour crisis hotline. Training is given on the nature and incidence of domestic violence, rape, sexual assault, child abuse and other related issues. Volunteers learn techniques for crisis intervention and counseling, and details about community resources on a regular basis. When on hotline duty, volunteers are supported by a KAFSC staff member. When not covering the hotline, these trained volunteers provide valuable assistance and advocacy to clients in court, hospitals, schools and social service agencies.

Harmony

Harmony is a group of trained hotline volunteers and advocates who help recruit and coordinate volunteers. The group follows the Center's mission to promote leadership and offer peer support. Harmony supports KAFSC on all its fundraising and awareness efforts, including the Annual Silent March, One Day Restaurant and Purple 5K Run.

Sundojah Train-the-Trainer Program (NEW)

This is a new initiative to move beyond volunteer training and mobilize trained individuals in the community to reach and train others through personal and community-based networks. Currently KAFSC has 10 Sundojahs who have been customizing the domestic violence and sexual assault training they received to provide workshops, outreach and training to friends and groups, reaching 225 members in the community.

Silent March against Domestic Violence & Sexual Assault

Every year during Domestic Violence Awareness Month (October), KAFSC organizes a silent march in partnership with local police, churches, various sister agencies and other community-based organizations to raise awareness about domestic violence and sexual assault and promote social justice. This march is a culmination of community events and activities held throughout the year. Participants march in silence through the streets of Flushing protected by police escorts, to honor the many lives lost to domestic violence and reaffirm our commitment to its eradication.

Training, Education & Outreach

We offer ongoing community workshops throughout the Tri-state area covering a broad range of subjects, including parenting and communication skills, relationships, anger management, conflict resolution, sexuality, family dynamics and other topical issues, as well as information sessions about KAFSC's programs and services. We also speak at local events, appear on radio and TV, and write regular editorial columns in the Korean press. We visit schools, churches, hospitals, police stations and other nonprofit and civic organizations to reach out to the community. All our workshops are free and open to the public.

VOLUNTEER HIGHLIGHT

Sung Sook Rah,
HARMONY member since 2010

Interviewed by Volunteer Coordinator, Jiye Kim and
Director of Programs, Saenam Kim

Translated by Kwang Eun Kim

KAFSC: HOW DID YOU FIRST GET INVOLVED WITH KAFSC?

I first found out about KAFSC through a newspaper ad of volunteer educational programs. I wanted to communicate with my children and learn to understand the mindset and thoughts of the second generation. I became interested in counseling and started serving as a volunteer at the Center. At that time, I was not aware what kind of volunteer work I would do.

KAFSC: WHAT IS THE BEST/ WORST THING TO HAPPEN SINCE YOU STARTED WORKING WITH KAFSC?

The best thing is that I learned ways to counsel people who were facing hardships in life. As I learned more about domestic violence and interpersonal relationships, I saw myself changing and became healthier emotionally myself. I only wish I had more time to provide more services.

KAFSC: WHAT HAS SURPRISED YOU THE MOST ABOUT WORKING WITH THE CENTER?

I was surprised to find that KAFSC is an organization that is capable of working with government officials and city-wide organizations to protect people in difficult times and help them stand on their own feet. Over time, I saw how the Center is

remembered as a life benefactor by many people who were empowered to build independent lives. Some volunteers were facing hardships themselves. I was impressed by their dedication to making time to come to the Center to volunteer despite their own struggles.

KAFSC: WHY ARE YOU SUPPORTING KAFSC AS OPPOSED TO OTHER GROUPS WORKING IN THE COMMUNITY?

I joined in 2010 and stayed. I support KAFSC because 1) those working at the Center demonstrate a value for each life they cross, 2) I can help both victims and offenders find joy and happiness, and 3) I learn a lot about domestic violence through the continued education programs. I have realized many people are not aware or concerned about this issue. I want to keep making an effort to help many homes become healthy and address the roots of domestic violence.

KAFSC: WHAT WOULD YOU TELL SOMEONE WHO IS THINKING ABOUT VOLUNTEERING WITH KAFSC?

I would like to tell people that volunteering at KAFSC is a great opportunity to work for others. Their hearts will be filled with joy in helping build happy lives and harmony with others.



KAFSC: WHAT DO YOU WISH OTHER PEOPLE KNEW ABOUT KAFSC?

I wish more people knew about KAFSC's work and that the Center is here to help. By being involved, they will know that they are not alone. All information shared is kept in strictly confidentiality. My own efforts to become a better informed volunteer increased my own awareness and helped myself and my family to become much healthier than before. In immigrant homes, we often see one way communication and cultural differences between generations. I thought before that it was normal for these to exist. But now, I realize that this is not so. Each of us can change and improve to meet others where they are. I learned that happy homes are built on proper relationships of mutual communication and respect. Happy homes really do ultimately make a happy society.

FINDING HOPE THROUGH KAFSC

CLIENT STORY: TERESA

Teresa* is a single mother of three young children. While dating her ex-husband, Teresa experienced physical and verbal abuse. After finding out she was pregnant, Teresa knew leaving the relationship would be difficult. She hoped the relationship would improve by raising their child together. Instead, the behavior of her now-husband grew worse despite having three children. One day after a particularly severe incident of being strangled by her husband, Teresa called the police from the emergency room after going to check her neck and was discharged immediately to a local shelter.

Taking steps to build a new life was not easy, yet Teresa resolutely worked hard for herself and her three children, all under the age of six (6). She was able to receive legal help through Queens Legal Services and social services from the shelter. The impact of recently having left a relationship of severe physical, emotional and psychological abuse, having three children to care for and having limited income made self-sufficiency an impossible goal during the three month stay allowed at the shelter. To provide more time to build a new life, Teresa was referred to the Rainbow House shelter, thereby acquiring three more

months of emergency housing and access to a variety of on-going holistic services such as housing, job seeking support, and child care.

Many nights, Teresa got only a few hours of sleep, taking care of her children after work and then rising early to feed and get two of her three children ready for school before going to work. After their stay at Rainbow House, Teresa's family was accepted to KAFSC's Transitional Housing program, allowing Teresa and her three small children to stay in a safe home of their own in a familiar neighborhood. Having transitional housing is allowing Teresa to build credit and steadily transition to self-sufficiency by gradually decreasing rental subsidy support. Through her hard work, Teresa has now obtained a part-time job as a parent advocate and has enrolled in a Certified Nurse Assistance program with financial support from KAFSC. Her goal to build a financially independent life for herself and her children is becoming a certain reality as she progresses with her work and education, and heads towards graduation from the Transitional Housing program.



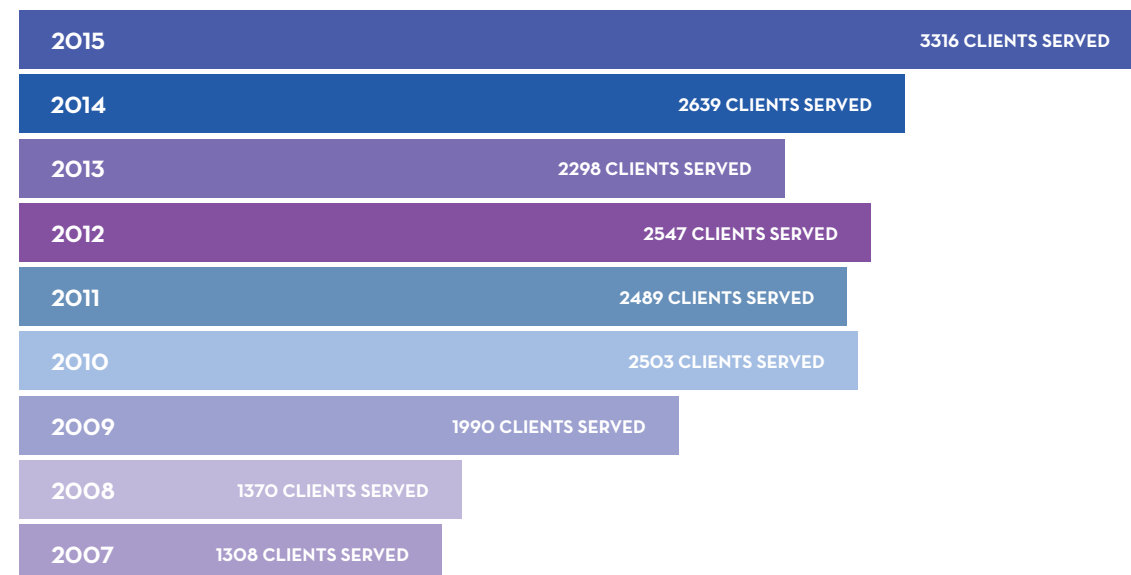
*Client name changed to protect identity

"I went to several agencies but it was KAFSC that really helped me. They gave me the real help I needed."

KAFSC 2015 PROGRAM STATISTICS

JANUARY 2015–DECEMBER 2015

NUMBER OF CLIENTS SERVED BY KAFSC



NUMBER OF CASES SERVED

NUMBER OF CASES	2015	2014	2013	2012	2011
DOMESTIC VIOLENCE (DV)	1,713	1,260	930	1,187	1,135
SEXUAL ASSAULT (SA)	249	131	62	23	8
OTHER ISSUES RELATED	882	803	585	453	490
TOTAL	2,844	2,194	1,577	1,663	1,633



ADULT PROGRAM SERVICES	2015	2014	2013	2012	2011
HOTLINE CALLS	2,785	2,579	1,652	1,620	1,754
*DV/SA RELATED HOTLINE CALLS	2,015	1,896	1,147	1,176	1,378
*NON-DV RELATED CALLS	770	683	505	444	376
WISH SUPPORT GROUP PARTICIPANTS	40	37	35	27	38
SELF-SUFFICIENCY: ENGLISH CLASS	286	120	123	227	139
SELF-SUFFICIENCY: COMPUTER CLASS	490	257	164	233	141
SELF-SUFFICIENCY: QUICKBOOKS CLASS	212	181	93	74	N/A
SELF-SUFFICIENCY: SEWING CLASS	233	N/A	N/A	N/A	N/A
SELF-SUFFICIENCY: UNITS OF JOB CONSULTATION	100	105	121	N/A	N/A
LEGAL CLINIC: INDIVIDUAL PARTICIPANTS	42	44	42	50	41
UNITS OF INDIVIDUAL COUNSELING SESSIONS (PHONE, ONLINE AND IN-PERSON)	4,306	3,385	2,065	1,985	2,189
UNITS OF ADVOCACY SERVICES	3,831	2,507	1,158	1,276	1,328
UNITS OF INFORMATION & REFERRALS	1,358	850	709	821	889
SHELTER: NUMBER OF CLIENTS WHO WERE HOUSED	28	26	N/A	N/A	N/A
SHELTER: NUMBER OF BED NIGHTS	1,273	2,340	N/A	N/A	N/A
SHELTER: NUMBER OF CLIENTS WHO WERE ASSISTED THROUGH RAINBOW HOUSE	109	101	N/A	N/A	N/A

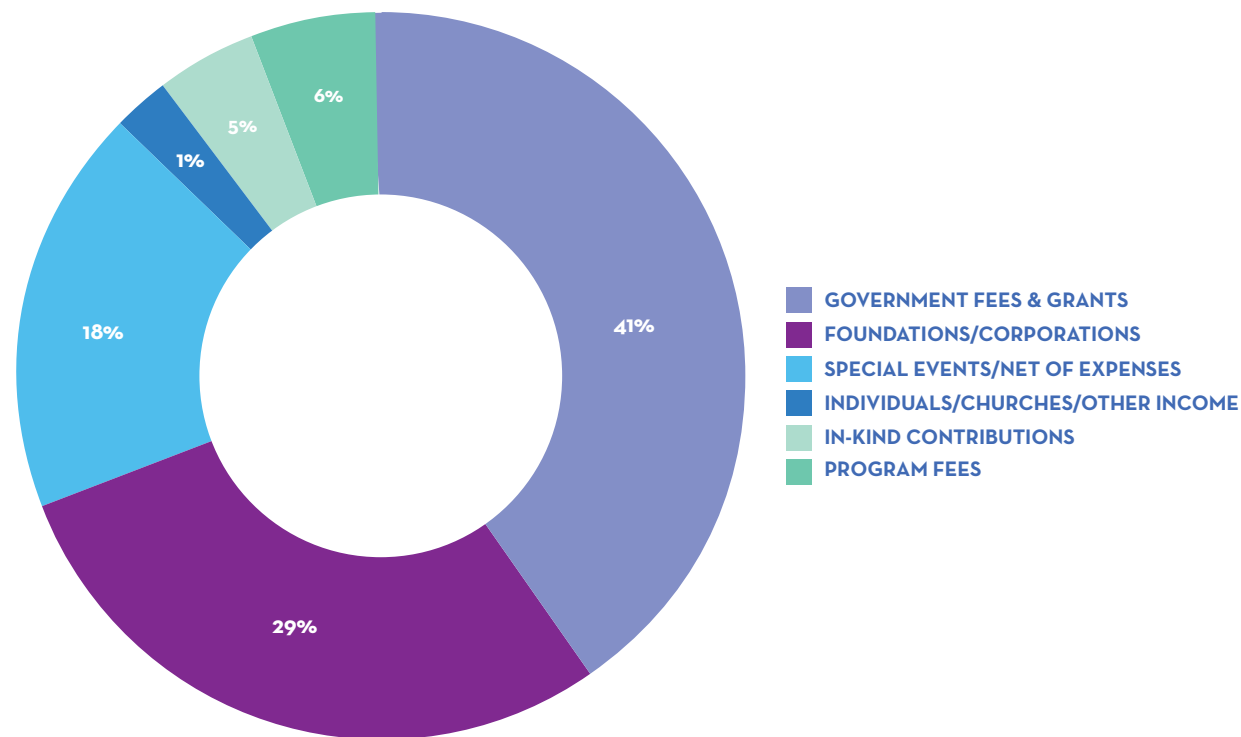
CHILDREN & YOUTH PROGRAMS	2015	2014	2013	2012	2011
HODORI PROGRAM PARTICIPANTS	349	239	173	109	89
*AVERAGE ATTENDANCE RATE	88.25%	93%	92%	96%	96.7%
GROUP PARENTING PARTICIPANTS	N/A	60	N/A	136	210
*NUMBER OF GROUP PARENTING WORKSHOPS HELD	N/A	1	N/A	14	10
SUMMER CAMP PARTICIPANTS ASSISTED BY THE PARTNERSHIP WITH FRESH AIR FUND	N/A	N/A	N/A	82	79
HODORI SUMMER SESSION	162	85	84	47	N/A
YOUTH COMMUNITY PROJECT TEAM (YCPT) MEMBERS	75	66	66	77	66
*AVERAGE ATTENDANCE RATE	70.2%	70%	80%	80%	88%
*NUMBER OF STUDENTS WHO RECEIVED PRESIDENTIAL COMMUNITY SERVICE AWARDS	26	28	32	7	4
*TOTAL COMMUNITY SERVICE HRS EARNED	4,943	5,181	6,186	4,408	3,117
*AVERAGE SERVICE HOURS PER STUDENT	94.16	79	94	57	47
MENTORING PROGRAM MATCHES	9	11	11	4	20
INDIVIDUAL PARENTING PARTICIPANTS	N/A	N/A	19	N/A	N/A
*NUMBER OF INDIVIDUAL PARENTING WORKSHOPS HELD	N/A	N/A	100	N/A	N/A
PARENTING EDUCATION: NUMBER OF PARENTS WHO PARTICIPATED IN THE PROGRAM	47	43	N/A	N/A	N/A
PARENTING EDUCATION: # OF CHILDREN WHO PARTICIPATED	22	19	N/A	N/A	N/A

COMMUNITY EDUCATION & OUTREACH	2015	2014	2013	2012	2011
VOLUNTEER TRAINING PARTICIPANTS	32	46	30	24	33
TOTAL NUMBER OF HOTLINE VOLUNTEER HOURS SPENT	6,736	6,360	5,680	6,208	6,601
PUBLIC EDUCATION/WORKSHOP PARTICIPANTS	919	673	446	922	1,099
COMMUNITY OUTREACH EVENTS HELD	63	26	29	16	64
ANNUAL SILENT MARCH PARTICIPANTS	80	150	150	120	120
NEWSPAPER ARTICLES AND COLUMNS	163	198	120	189	86

*INDIVIDUALS SERVED—COUNTED AS TOTAL NUMBER OF CASES + WISH PARTICIPANTS + SELF SUFFICIENCY + HODORI PARTICIPANTS + SUMMER SESSIONS + YOUTH PARTICIPANTS + MENTORING PARTICIPANTS

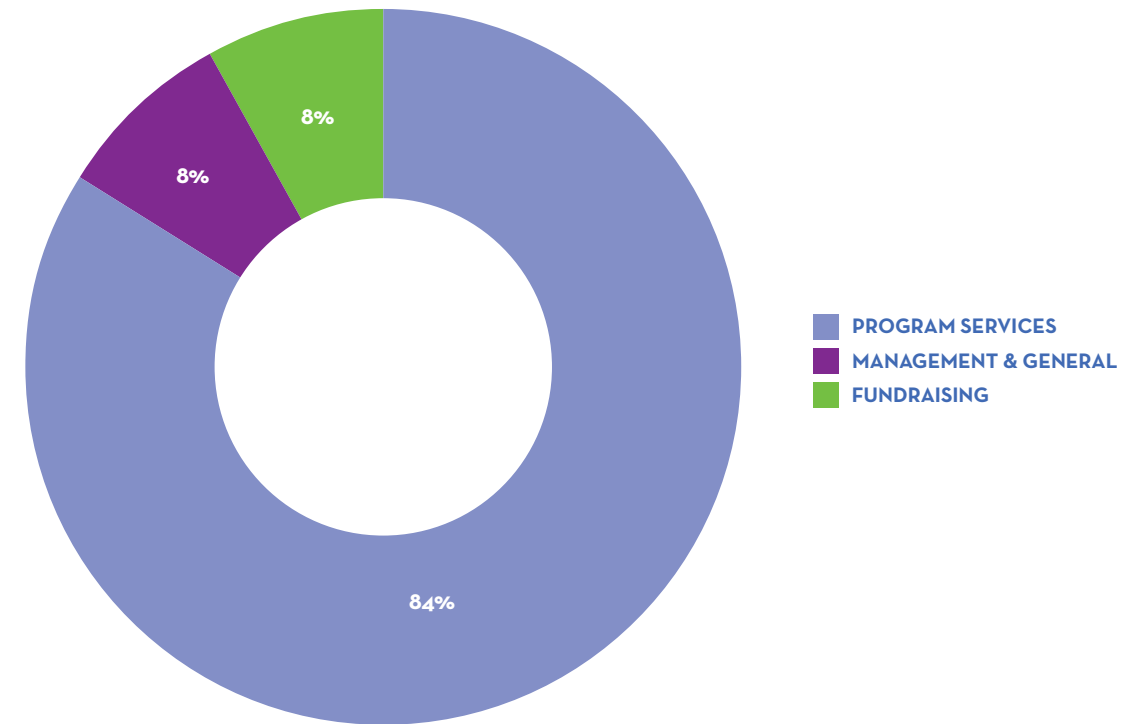
FY2015 FINANCIAL REPORT

OCTOBER 2014-SEPTEMBER 2015



FY2015 OPERATING REVENUE

SUPPORT & REVENUE	2015	2014	2013	2012
GOVERNMENT FEES & GRANTS	\$903,890 (40.6%)	\$428,747 (17.6%)	\$398,482 (30.3%)	\$497,481 (37.8%)
FOUNDATIONS/CORPORATIONS	\$646,735 (29.1%)	\$661,750 (27.1%)	\$375,566 (28.6%)	\$292,068 (22.2%)
SPECIAL EVENTS/NET OF EXPENSES	\$410,093 (18.4%)	\$574,831 (23.6%)	\$271,465 (20.6%)	\$304,385 (23.1%)
INDIVIDUALS/CHURCHES/ OTHER INCOME	\$36,430 (1.6%)	\$175,483 (7.2%)	\$22,347 (1.7%)	\$26,016 (2.0%)
IN-KIND CONTRIBUTIONS	\$101,400 (4.6%)	\$95,400 (3.9%)	\$138,605 (10.5%)	\$158,671 (12%)
PROGRAM FEES	\$125,699 (5.7%)	\$119,212 (4.9%)	\$109,099 (8.3%)	\$37,769 (2.9%)
NET ASSETS (DONATED BY RAINBOW CENTER INC. OF NY)	N/A	\$383,438 (15.7%)	N/A	N/A
TOTAL SUPPORT & REVENUE	\$2,224,247	\$2,438,861	\$1,315,564	\$1,316,390



FY2015 OPERATING EXPENSES

EXPENSES	2015	2014	2013	2012
PROGRAM SERVICES	\$1,585,253 (83.9%)	\$1,111,041 (80.5%)	\$1,034,437 (83.3%)	\$917,896 (82.6%)
MANAGEMENT & GENERAL	\$151,931 (8.0%)	\$140,217 (10.2%)	\$118,842 (9.6%)	\$124,460 (11.2%)
FUNDRAISING	\$151,551 (8.0%)	\$128,190 (9.3%)	\$88,632 (7.1%)	\$69,670 (6.2%)
TOTAL EXPENSES	\$1,888,735	\$1,379,448	\$1,241,911	\$1,112,026

	2015	2014	2013	2012
CHANGE IN NET ASSETS	\$335,512	\$1,059,413	\$73,653	\$204,364
NET ASSETS AT BEGINNING OF YEAR	\$1,886,557	\$827,144	\$753,491	\$549,127
NET ASSETS AT END OF YEAR	\$2,222,069	\$1,866,557	\$827,144	\$753,491

INSTITUTIONAL FUNDERS

OCTOBER 2014-SEPTEMBER 2015

The generous and critical support we have received from foundations, businesses, and individuals, as well as grants from state and local government agencies, are the lifeblood that continues to keep us alive.

With each gift and grant, we received not only the vital funds to keep our work going, but also a strong affirmation of our mission, and what definitely feels like a personal encouragement for each of us to keep the faith, and stay the course. We are grateful for the following funders whose generous support made our programs and services possible.

PUBLIC SOURCE

Korean Consulate General of New York
Mayor's Fund to Advance New York City via NYC Service
National Association of VOCA Assistance Administrators - Office for Victims of Crime
New York City Council -Communities of Color Nonprofit Stabilization Fund
New York City Council Discretionary Fund -- DoVE Initiative through Safe Horizon
New York City Department of Youth and Community Development (DYCD)
New York City Mayor's Office of Criminal Justice
New York State Division of Criminal Justice Services (DCJS)

New York State Office of Victim Services (OVS)
The City of New York, Office of the President of the Borough of Queens, Melinda Katz
The Council of the City of New York via:
• Speaker Council Member Melissa Mark-Viverito, District 8, Manhattan, South Bronx
• Council Member Mark Weprin, District 23, Queens
• Council Member Paul Vallone, District 19, Queens
• Council Member Peter Koo, District 20, Queens
• Council Member Rory Lancman, District 24, Queens
U.S. Department of Justice, Office on Violence Against Women

PRIVATE SOURCE

\$50,000 and Above

Avon Foundation for Women
Help For Children/Hedge Funds Care
Starry Night Fund/Chicago Community Foundation via Anne E. Delaney
The Grace and Mercy Foundation
The Ong Family Foundation
The Pinkerton Foundation

\$25,000 - \$49,999

Daphne Foundation
Korean American Community Foundation (KACF)
New York Merger, Acquisition and Collaboration Fund
Verizon Foundation

\$15,000 - \$24,999

Cathay Bank Foundation
Mary Kay Foundation
NTC Wismettac Foundation

Southpole Foundation through Asian American Federation & Beautiful Foundation

\$10,000 - \$14,999

Andrew and Barbara Choi Family Foundation
Melissa and Doug Hahn Charitable Trust

\$5,000-\$9,999

Aon Foundation
Best Buy Foundation
C. J. Huang Foundation
Tiger Baron Foundation

Less than \$5,000

Amazon Smile Foundation
Bank Leumi USA
Fidelity Charitable Gift Fund via Jeannie Park
Marian Family Foundation
Payless ShoeSource
Queens Sharing Hope Foundation
Staples Foundation
Tiger Baron Foundation
T & W Foundation, Inc. via Wonsook Kim
The Lothar Von Ziegesar Foundation, Inc.
YMS Management Associates, Inc.

Corporate Matching Gifts Program

American Express Employee Giving Program via Suzy Y. Kim
Goldman, Sachs & Co. via Andrew Alford
Merck Foundation via Kwan-Hong Min
Microsoft Matching Gifts Program via Elaine Tai
Morgan Stanley Charitable Spending Account via Julie Chi, Carol Park
Morgan Stanley Foundation via Julie Chi
YMS Management Associates, Inc.

RELIGIOUS SOURCE

Amen Korean United Methodist Church of Novi
Arumdaun Presbyterian Church USA
Central Presbyterian Church of NY
Chamsarang Korean Methodist Church
Chodae Presbyterian Church
Council of Korean Churches of Greater New York
Faith Presbyterian Church (aka Woori Church of NY)
First Korean Methodist Church of Frederick
Gospel Presbyterian Church
Hosanna Presbyterian Church
Korean First Presbyterian Church of NY
Korean Presbyterian Church Women's Association
Living Faith Community Church
Love and Truth Christian Center, Inc.
New York Mosaic Church
New York Presbyterian Church
Onnuri Church of New Jersey
The Korean Church Daily News
The Love of Christ Presbyterian Church
Remnant Presbyterian Church
Yale Korean Presbyterian Church in New York

\$25,000-\$49,999

Melissa Ko & Doug Hahn
NOAH BANK

\$15,000 - \$24,999

BANK OF AMERICA

\$10,000 - \$14,999

Sandra Ahn-Lee, MD
Helen Song & Lap Chan
Myung Shin & Wha Sup Chung
GRANT SUPPLIES
HOLY NAME MEDICAL CENTER
Simi & Dr. Thomas Kahn
Jamie Ji-sun & Peter Lee
THE TONI KO FOUNDATION

\$5,000 - \$9,999

CHAPMAN AND CUTLER, LLP
Kyung Hee Choi
DASHING DIVA
Misook & Harry C. Doolittle
DR. YOM'S CHIROPRACTIC/MURRAY HILL THERAPEUTICS
Joon Hong
Jennifer & Eliot Kang
Roger Kang
Victoria Mok
LIME LIGHT ENTERTAINMENT GROUP, INC.
NORTH SHORE LIJ
ORSYN ABSTRACTS, LLC
David H. Park
Julienne & Elliot Park
Jennifer K. & Roger C. Park
Paul Yoon
ROSENTHAL & ROSENTHAL, INC.
SPRINGFIELD RADIOLOGY IMAGING PC.
Minsun Kim and John Yoo
YOUNGSOL CORP

\$3,000 - \$4,999

AON FOUNDATION
Eunsook Bang, MD
BBCN
BLANCHE FURS
Chris Choi
Yukyong Kianna Choi
Young Sook & Charles Chong
Guy L. Chung
Max Fortin
Kyungsil Kim and Sung Chul Jung
KMC EXIM CORPORATION
Kyung & Dr. Jen Lee
JinHee & Alexander M. Lee
Kwanghee Kim & Dr. Chin Ok Lee
Karen Mi Sun Lee
So-Chung Shinn & Tony W. Lee
BJ & Suok Noh
NY HOSPITAL MEDICAL CENTER OF QUEENS
Michelle Lee & Chul Pak
Hannah Park
Tai H. & Jenny Park
Ellen S. Yoon
Helen Hae Ja Yoon, MD

\$2,000 - \$2,999

Sam Choi
COMMUNITY OF KOREAN WOMEN
MIZVILLE, INC
CON EDISON
EINHORNHARRIS
Susan & Dr. Edmund Kwan
Michael Maron
Youn Ju Namkoong
THE NEW YORK ACADEMY OF MEDICINE
Lara Stolman and Michael J. Watzky
Hyeyoung Lee & Erik Wildt
WILSHIRE STATE BANK, Corporate Headquarters

INDIVIDUAL & BUSINESS DONORS

OCTOBER 2014-SEPTEMBER 2015

\$1,000 - \$1,999

APALA-NJ
ASIAN AMERICAN FEDERATION OF NY
CADWALADER, WICKERSHAM & TAFT LLP
Alex Chae
BANK LEUMI USA
Julie Chi
Elizabeth Cho
Jun Choi
Bo Chung
Mina Chung
Sung Wook Michael Chung
CMS RISK SOLUTIONS
DAY ONE NEW YORK, INC.
DOUBLETREE BY HILTON FORT LEE
Roger Hahn
Peter Isajiw
Joanne Jo
Do In Jounge
Jung Sook Kang
Nan Won & Wan-Mo Kang
Koung M. & Jin Wuk Kim
Jason Kim
John H. Kim MD, PC
Jung Eun & Dr. Steve Kim
Kevin Kim
Korean Student Association (FIT/ BARUCH/STONY)
Mike Joo
LA GUARDIA COMMUNITY COLLEGE
Anna Lee
Esther & Kevin Lee
Joy Hee & Dae Soo Lee
Lauren U. Y. Lee
Audrey Leigh
LONG ISLAND CONSERVATORY LTD
Patty Mah
NEW YORK 11
NEW YORK ADULT DAY CARE CENTER CORP
NY NORTHERN PHARMACY
Joanne Ok
Eun Sook and John Pai
Catherine Park
Jinseong Park
Sue Park
Wonhui Sylvia Park
QUEENS SHARING HOPE FOUNDATION
Angela Ihryung & Charles Rhyee
Aiyoung Choi & Eugene C. Schwanke
SHINHAN BANK
Dr. Jason Song
Elaine Tai
Gary Taratunio
Jungsook Grace Yoon & Noah Taylor
THE NATIONAL UNIFICATION ADVISORY BOARD COUNCIL, NY CHAPTER
Kate & Esam Trabulsi
VASCULAR BIRTHMARK INSTITUTE OF NEW YORK
WOORI AMERICA BANK
Hee K. Yang, MD
Young Yim
YMS MANAGEMENT ASSOCIATES, INC

\$500 - \$999

Andrew W. Alford
Jessica Baek
BNB HANA BANK
Jason Kim & Sarah Cha
CHINATOWN MANPOWER PROJECT, INC
Chan Koo and Sung H. Cho
David H. Cho
Jaesup Choi
You Jin Chung
Regina Chi & James Francis Clancy
Jhanice Domingo
DOUGLAS ELLIMAN REAL ESTATE

DRC SANNAM FORUM INC
ELM PROPERTY HOLDINGS, LLC
HAHM JI BACH RESTAURANT
HANMAEUM
HARMONY
Michelle Heo
Margaret Horowitz Haus
Keum Ja & Byung S. Kang
Christina Kang
Claire & Sung Kang, MD
Rachel Kang
Yun Yon & Sang C. Kang, MD
Young Hae & Un Jung Kang
Bomsinae & Jeen Kim
Jason Kim
Jeannie Kim
Sunwoo & Sam Kim
KOREAN AMERICAN YOUTH FOUNDATION
Drs. Yangnim & Larry Kurz
John Lee
Joon Lee
Sharon Cha Lee
Soohee Lee
Dr. Soo Il & Eunkyoung Lee
Wai Leung
Yeong Lim
Chris Meier
MEDICAL OFFICE OF CHANG SUK LEE, MD
METRO DERMATOLOGY OF NY PC
Luke Miller
Chris Min
Iris Moon
NEWARKER LLC
NY Hospital Medical Center of Queens
Sung Whun & Moonja K. Oh
Jesun & Hisuh Paik
Michael Park
Peter Park
Liron and Julie Reznik
Kylim Rhee
Philip Seo
Mi Young Shim
Fumihto Shinohara
Yung Moon & James Slater
Woo Song
SUFFOLK FIRST MEDICAL PC
Sarah BJ Sung
THREE BROTHERS ACCESSORIES, INC
Hye Suk Yoon
Sarah L. & Changpae J. Yu

BELOW \$500

Derek Ahn
Michael Ahn
AHN INSURANCE AGENCY, LTD
Anna & Hansang Bae
Grace Baek
Hanna Baek
Heh-young Baek
Elise Bernal
Ellen H. & Kenneth Blau
Tara Brennan
Robert Campbell
Joseph Cha
Soh Won Cha
Esther Chae
David H. Chang
Jason Chang
Kevin Chang
Sarah Chang
Yujin Chang
Amanda Chapman
Lucy Cherkasets
Julie Cho
Katherine Cho
Seung Hyun Cho
Young Hwa Cho
Alex Choi

Brandon Choi
Byung J. Choi
Doo Min Choi
Jeong Ok Choi
Sung Choi
Ethan Chuang
Eric Chun
Hannah Chung
Jae Chung
Mohit Dhillon
DONG A INSURANCE
EWAH GIRLS' HIGH SCHOOL '71 GRADUATES
Sharon Fan
Matthew Farris
Jeehae Lee & Jesse Fischer
Richard Allen Fisher
Kira J. Belkin & Saul Fishman
Bernadette Forward
Stephanie Fox
Abraham Fuchs
Brennan Gang
GRACE PHYSICAL THERAPY PC
Melvin Grunau
Eve Cho Guillergan
Dr. Youngsook Hahn
Agatha Han
Edward J. Han
Jasmine Hyejin Han
Okcheon Han
HANGGRAPHIC (ANGEL PROJECT)
Meesoon Heo
Andrea Herskowitz
Eugene Hong
Janice Hyun Sook Hong
Julie Hong
Sungha Hong
HONOR'S HAVEN RESORT & SPA
John Hopson
Yushan Hsieh
Matthew Huddleston
Veronica Huh
Stanley Hui
Katherine Hung
HUNTER-BELLEVUE SCHOOL OF NURSING
Heidi Hwang
Andrew Hyun
Eul Hyang Hyun
Monica Eunsun Hyun
Esther Im
Patricia Im
MILKIMCHI INC.
Jung Yun Jang
Sung Jang
Teja Jayanthi
Soyun Rebecca Jee
Barbara Jiang
Carol Jin
JIRAN SON PHYSICAL THERAPY PC
Stephen Jo
Hyun Sook Ju
Young Hee & Jin Won Jun
Byung Soo Jung
Ilhyun Jung, DDS
Kate Juon
KAAQNY
Ashley Kang
Christie Kang
Edward Kang
Esther Kang
Yoonak Christie Kang
Veronica Khim
Albert Kim
Alex Kim
Betty Kim
Brian Kim
Caitie Kim
Cham Chim Kim
Chang Shik Kim
Chieon Kim
Claire Kim

Dal Joohn Kim
Debbie Kim
Esther Kim
George Kim
Grace Kim
Hae Soon Kim
Haejin Kim
Hee Hyun Kim
Hee Ok Kim
Helen Kim
Hyun K. Kim
Ja Yeon Kim
Jean Kim
Jenny Kim
Joyce Kim
Jungdong Kim
Kwang Kim
Min Kim
Min Jung Kim
Pureum Kim
Rebecca Kim
Reverend Eun Joo Kim
Seung Hyun Kim
Sunnie Kim
Young Han Kim
Young Kun Kim
KIPS GALLERY, INC
Cora Kobischka
Tae Kyung Kong
KOREAN COMMUNITY SERVICES OF
METROPOLITAN NY, INC.
Yeong Kwon
Carlo Leabres
Kaitlin Lebbad
Boram Lee
Christine Lee
Chung Sun & Daesoo Lee
David Lee
David H. Lee
Eugenia Lee
Eunice Joy Lee
Hye Kyung Lee
Hyun Gon Shin & Jeeyun Lee
Jane Lee
Jennifer Lee
Jenny Lee
Jihoon & Ae Lee
Jiyeon Lee
Joseph Lee
Maria K. Lee
Melissa C. Lee
Patricia Lee
Rachel Lee
Seungah Lee
Sunny Lee
Susie Lee
Sylvia Lee
Tony Lee
William Lee
Yu Young & Jae Lee
Miok Lee, MD
Alla Leventful
Chris Lim
Il Ryun Lim
Joyce Lin
LIONS CLUB INTERNATIONAL 20-R2
Alexander Lo
MILAL MISSION
MINKWON CENTER FOR COMMUNITY
ACTION, INC
Jennifer Moon
Annie Moore
Jeffrey Moore
Hyun Sil Mun
Eunice Nam
NEW YORK & NEW JERSEY CLASSICAL
YOUTH ORCHESTRA
NEW YORK ASIAN WOMEN'S CENTER
Tiffany Noh
Makiko Obata
Caroline Hyo Jung K. Oh
Elizabeth Oh

Jung G. Oh
Kaitlyn Orwig
Marissa Owsley
Chun Pak
Eunice Young H. Pak
Amy Pang
Ambrose & Legina Park
Amy Park
Charine Park
Cynthia Park
Daniel D. Park
Hayley Park
Holly Hae K. Park
Inn-Young Park
Jenny Park
Kyung Hee Park
Lisa Park
Neil R. Park
Ro & Jiwoo Park
Simon Park
Soo Park
Yooru Park
Young Park
PEARSON PENGUIN GROUP, INC.
Sharon Perkins
Alice Phillips
Michael Plata
Oksana Poltavets
James Qian
Sung Sook Rah
Gyoung Rok Rhee
RUMC WOMEN'S CLUB
Rebekah Ryu
SARAH BEAUTY SALON
Janice Savengrith
Ludo Scheffer
Susan Seo
Charissa Shen
Jessica Shim
Andrew Shin
Jennifer Shin
Sang Shin
Sarah Shin
Stanley So
Ezra Sohn
Hannah Song
Jeannie Song
Hyunsoo Suh
Sunhwa Suh
Geeta Sundrani
Vera Sung
Heela Suzuki
UHC
Susan Uhm
Anisha Vachani
Krysel Walasik
Grace Weiner
Sean Willis
Jessica Wong
Mannar Wong
James Woo
Jin Ok Woo
WOORI PHARMACY LCC
Julia Wu
Barbara Brizzi Wynne
Arthur Xu
Jimmy Yan
Boyoung Yang
Sophia Hui Yang
Joseph Yi
Jee Soo Yoo Yoo
Jinny Yoo
Gayoung Yoon
Jae W. Yoon
Richard Sei-Oung Yoon
Samuel Yoon
Yuna Yoon
Elizabeth J. Miu-Lan Young
Wendy Young
Haeyong Yu
Jeffrey Yu
Judie Yu

Perrier Yuen
Esther Yum
Young Yun
YWCA OF QUEENS
Isabelle Zee
Elliot Zhang

**PIGGY BANK CAMPAIGN
SUPPORTERS**
CHINESE HOUSE RESTAURANT
DRY CLEANER 156

**IN-KIND DONATION
GALA AUCTION/RAFFLE ITEMS**
3LAB

Aiyoung Choi and
Eugene C. Schwanke
Akane Ogura
Amelia Lundy
Anna Kim
Aon Foundation
Bliss Acupuncture Wellness Clinic
Bradley Marshall
Byung S. and Keum Ja Kang
Charlie Barrett
Cherry
Christian Norman
David Khym
Diana Seo
Ellen McGuire
Estee Lauder Companies
Hee K. Yang, MD
Honor's Haven Resort & Spa
INTERMIX
J. Ranyee Lee
Jeffrey Shaw Portrait Photographer
Jenny J. Song
Jihyun Lee
John Koh
Kang Ho Dong's Baekjeong/PULSE/
CIRCLE/ARENA
Karen Lee
Knitty City
Kyung Hee Choi
Lands' End
Lee Perla
Margaret Horowitz
Michelle Lee & Chul Pak
MK Lounge / Third Floor Cafe / Soju
House
Mr. & Mrs. Minsun Kim and John Yoo
Mr. Guy L. Chung
Ms. Sarah BJ Sung
My Optical
Noel Hodges
OPTYX
Pearl Theatre
Penhaligon's
Rim's Fine Jewelry
Sara Kim & Thomas P. Beague
Sarah Chang
Scout HK
Sean Couey
SoulCycle
Stetson
Sung Sook Setton
Takuya Hayaki
Tatiana Von Zitzewitz
Thomas Clement & Wonsook Kim
VickyC5
Wondermento
Young Sook & Charles Chong
Yuna Yang

**GROCERY/FOOD/CLOTHING/
FURNITURE, ETC.**
1004 FUND
Sang Hee Bae
Eunsook Bang, MD
Helen Song & Lap W. Chan
Steven Chang
FREE TURKEYS KOR-AMERICAN

FOUNDATION CORP
Jasmine Hyejin Han
John Han
Mary Sukjong Hong
JINGA
Joanne Jo
Byung Joon Jun
Alex Kang
Ashley Kang
Jennifer Kang
Meejin Kang
Taylor Kang
Chunni Kim
Dohyung Kim
Eun-Kyung Kim
Hae Ja Kim
Namhee Kim
Sarah Kim
KORYODANG BAKERY (BAYSIDE)
David Lam
Susan Lee
Sooil Lee, MD
Leah Leem
Adrienne D. Leslie
Il Ryun Lim
Jung Sook Lim
MISS KOREA
Victoria Y. Mok
MOSAIC CHURCH
Jung Mi Nam
NASAMO
NEW YORK METS COMMUNITY
TICKETS
NY REMNANT CHURCH
NY WOORI CHURCH
Seon Mi Oh
Dohsook Pak
Cecilia Park
Chang Kyu Park
Jane Park
Jennifer K. & Roger C. Park
Si Hee Park
PATMOS
PAYLESS SHOE SOURCE
QCC NURSING STUDENT
ASSOCIATION
SPEEDY ENTERPRISE OF USA CORP
BJ Sung
Jungsook Grace Yoon & Noah Taylor
THE KOREAN CHURCH DAILY NEWS
THE KOREAN-AMERICAN SENIOR
MUTUAL ASSOCIATION
THE LORD'S TABLE
Vallerie
Merlyn Welds
Reverend Byung Man Woo
Keum Hee Yang
Yun Jin Yang
Jong Won Yom
Bok Soon Yoo

**ALL GIFTS TO KAFSC MAKE A
DIFFERENCE. WE APOLOGIZE
IF WE HAVE OMITTED ANY
DONOR OR RECOGNIZED YOU
INCORRECTLY. CONTACT US AT
718.460.3801 X14 OR VIA EMAIL
AT DEVELOPMENT@KAFSC.ORG
SO THAT WE CAN CORRECT OUR
DONOR INFORMATION FOR FUTURE
RECOGNITION.**

BOARD OF DIRECTORS

SARAH BJ SUNG, Chair

Sarah BJ Sung is the Public Affairs Manager at Con Edison. Prior to this position, she was the program outreach and implementation director of the Eastern region in the Global Community Programs Unit of Citi Global Consumer Group and was project manager at Citi Private Bank, working on cutting-edge systems and technology projects. She has also served on the boards of the Korean American Community Foundation, Asian Women Giving Circle and the National Association of Asian MBAs.

SHANNON SHIN CHOI, Vice Chair

Shin Choi is a financial consultant at Archegos Capital Management and also works as a fashion and marketing consultant to various companies. With over 30 years of experience and success across retail and fashion industries, Shin brings in-depth knowledge of consumer psychology. Prior to consulting, she was Creative Director of Shin Choi, a women's designer collection. Shin is a passionate supporter of community work and humanitarian causes, as well as mentorship of the next generation of leaders.

ROGER C. PARK, Treasurer

Roger is a New York-based principal in Ernst & Young's Advisory practice and leads the Strategic Technology and Architecture group for the Financial Services Office. He has over 17 years of experience in the financial services industry serving banking and capital markets clients. Prior to Ernst & Young, he worked for JPMorgan Chase and Accenture.

DAVID H. PARK, Secretary

Dave is a managing director at Archegos Capital Management. Having previously worked at firms such as Andersen Consulting, Goldman Sachs & Co. and Maverick Capital, his professional background includes finance, healthcare, technology and real estate. Dave also serves as treasurer of GBS, a non-profit organization for the artist community in Los Angeles.

AIYOUNG CHOI, Chair Emerita

Aiyoung is a consultant on organizational development for nonprofits. She was KAFSC board chair for 10 years and is a past board member of the NY Women's Foundation, Manhattan Country School, Union Theological Seminary, and Asian Americans for Equality. She is co-founder of Asian Women Giving Circle and advisor to the Coalition Against Trafficking in Women. In 2015 she crossed the DMZ from North to South Korea with 30 international peacemakers to call for peace on the Korean Peninsula and the leadership of women in the peace process. She is dedicated to the arts and social justice, has received numerous awards, and is a mentor to many.

SANDRA AHN-LEE, MD

Sandra is a board certified pediatric ophthalmologist and a partner at Suffolk Ophthalmology Associates PC in Bay Shore, NY. In addition to her private practice, she has been an eye care provider for underprivileged children at the Bay Shore Lions Club and St. Christopher Ottile Family of Services for more than 25 years. She is an active member of Alpha Omega Alpha Honorary Medical Society and currently resides in Long Island, New York.

JENNIFER KANG

Jennifer is an active member of the Korean American community in New Jersey. She has served on the Board of Trustees at Dwight Englewood School in Englewood, NJ chairing many fundraising events and programs. In addition to KAFSC, Jennifer is also involved with the Holy Name Hospital and the Bergen Family Center.

MYUNG SHIN LEE CHUNG

Myung Shin is a partner at WMGK LLC and MMGK LLC real estate companies. Previously KAFSC's board vice chair, she founded and heads Circle of Friends for KAFSC, a donor group of 16 Korean American women. She is also on the board of the WonKakSa Buddhist Temple. She was on the board of the Girl Scouts of America, and has been awarded by the National Academy of Fine Arts in New York for sculpture and honored by Ewha Girls

High School in Korea, Korean American Association of Greater NY and the Chinatown Manpower Project (CMP), NY.

DOHYUNG KIM, RPT

Dohyung is co-founder and CEO of Murray Hill Therapeutics (also known as Dr. Yom's Chiropractic and Alternative Care) in Flushing, NY. As CEO, he is responsible for general patient relations, administrative coordination and integrated facility management. With Dohyung at the helm for more than 10 years, Murray Hill Therapeutics has emerged as a distinguished practice. He was the General Secretariat of the Rainbow Center of NY Board and successfully chaired several fundraising Galas for the organization. He also serves the Korean American Civic Empowerment as a board member.

KYUNG-SIL KIM, PHD

Dr. Kim is a licensed psychologist and director of Maeum Institute. With over 30 years of counseling experience, Dr. Kim has devoted her career to improving the mental health of Korean Americans in our community and developing culturally appropriate counseling methods. Previously, she worked as the director and counselor at the Korean Family Service Center of AWCA. She received her Master's and Ph.D. in counseling psychology from Teacher's College at Columbia University.

JOON P. HONG, ESQ.

Joon is a partner at Richards Kibbe & Orbe LLP and specializes in restructuring and matters related to investments in distressed assets and situations. He started his legal career as a public interest lawyer, working in the Bronx office of the Civil Division of The Legal Aid Society, and has been actively involved with various non-profit organizations during his 20-plus years in New York City.

JOOHWAN LEE

Joohwan is the Founder and CEO at Joewn Entertainment, a professional multicultural advertising and media strategy planning agency, representing various businesses and companies in New York. He and his company have helped numerous

organizations such as the Korean American Construction Association for their special events and Rainbow Center's 2011 Annual Benefit Gala. Joohwan served Rainbow Center of NY as a board member for two years before it merged with KAFSC in January 2014.

JULIE CHI

Julie Chi is an Executive Director at Morgan Stanley. She oversees firmwide client data, managing a team of 100 specialists located in New York, Baltimore, London, Glasgow, and Mumbai. She has extensive experience in people management, business development, technology and governance, and a long history of demonstrated success improving processes, increasing productivity, reducing costs and minimizing risk. Prior to Morgan Stanley, she worked at Goldman Sachs and Long Term Capital Management. Julie serves on the founding board of the MYSELFMYLIFE, LLC, the owner and developer of b.Me, a unique personal well-being data integration app.

LAUREN U.Y. LEE, ESQ.

Lauren U. Y. Lee, Esq. has been actively supporting KAFSC for many years, including serving on the Benefit Gala committee and as pro bono counsel to several KAFSC clients seeking legal status under the Violence Against Women Act ("VAWA"). She obtained her B.A. from the University of Pennsylvania, magna cum laude, and her J.D. from the Temple University School of Law, magna cum laude. In 2007, Sanctuary for Families awarded her with its Pro Bono Advocacy Award for her VAWA work. Previously, she served on the board of the Asian American Legal Defense And Education Fund (AALDEF).

PETER BYUNGHO LEE

Peter Lee is a macro portfolio manager. He was most recently with Citadel, a hedge fund, as head of NY currency trading. Prior to that, he led derivatives trading at Eton Park Capital Management. Prior to Eton Park, he headed the equity volatility analytics group at Lehman Brothers for five years. He holds a PhD in Particle Physics from Caltech and a BS in Physics and Math from UC Berkeley.

ANNE MOSENTHAL, MD, FACS

Anne is a chair of the Department of Surgery at Rutgers New Jersey Medical School and formerly was vice chair of the Department of Surgery at the New Jersey Medical School in Newark, NJ. As a professor with an active clinical and academic practice and board-certified trauma surgeon, she has been honored as a Faculty Scholar by the Soros Foundation, Project on Death in America, and received a grant from the Robert Wood Johnson Foundation for her work in these areas.

ALBERT PARK

Albert Park is the Chief Investment Officer at WNW Capital, a private investment firm in New York. Prior to launching WNW Capital, he worked at firms such as Millennium Management, Goldman Sachs, Citigroup and Lehman Brothers and has a diverse background in finance, technology and real estate. He holds an MBA from the Wharton School at the University of Pennsylvania and BA from Princeton University.

DANIEL D. PARK

Dan is a nonprofit management and IT professional with 15 plus years of experience currently working for Park Avenue Armory, an art and cultural nonprofit. Previously, he worked for Baruch College Fund and CCS Fundraising consulting firm as the Raiser's Edge administrator and Director of IT respectively. Dan is a music/video production enthusiast - he has produced several TV programs for Korean Catholic Broadcasting and worked as sound engineer, DJ, and MC for many community, religious and private events.

MICHAEL D. YIM, ESQ.

Michael is a Partner at Sedgwick LLP and specializes in labor & employment and executive compensation law. He represents clients in the financial, hospitality, manufacturing and media industries. He is a board member of the International Association of Korean Lawyers. He was a Joseph R. Crowley Scholar and researched governmental compliance with international human rights standards in Northern Ireland and Kenya. Prior to law school, he worked

for a European record label managing North American artist development.

JOHN YOO

John is president of David & Young Company, a full-service accessories design, manufacturing and marketing firm whose retail partners include Macy's, Disney, J.C. Penney, Nordstrom, Kohl's, Sears and Aldo. He oversees a team of 90 employees in its New York and New Jersey offices. Recently, John received BBCN Bank (formerly Nara Bank)'s Young Entrepreneur of the Year Award for leadership and distinguished company growth. He is the Chair of the Board's Governance Committee.

PAUL YOON, ESQ

Paul is a partner at Wong Fleming and managing partner of its Fort Lee, NJ, office. Before that, he was assistant prosecutor in Essex County, clerked for the Honorable Joseph P. Donohue in Union County, and was Special Assistant to Washington D.C. Mayor Anthony A. Williams. He received the Woodrow Wilson Fellowship, was President of the Asian Pacific American Lawyers Association (APALA) of NJ, and is currently President of the Korean American Association of Fort Lee, NJ and board member of the Korean American League for Civic Action and Center for Hope and Safety (formerly Shelter Our Sisters).

Every day and in every way, the personal involvement of our volunteers—their understanding, enthusiasm, and support—provides KAFSC with immense strength and inspiration. They are truly the unsung heroes of our success. We want to thank all our dedicated volunteers who have given their talents, skills, and countless hours to make our programs and services possible.

24-HR BILINGUAL HOTLINE

Lilian Cho
Hyangran Chun
Yeung Hee Chung
Hyejin Han
John Han
Martha Hong
Eulhyang Hyun
Ilryun Im
Grace Ji
Hyunsook Ju
Jae Heun Jung
Soonyoung Jung
Amanda Kim
Ashley Kang
Eliot Kang
Jennifer Kang
Jessica Kang
Jungsook Jang
Dohyung Kim
Eunsook Kim
Gukhee Kim
Hyunhee Kim
Keumja Kim
Kimin Kim
Kum Ock Kim
Mijung Kim
Namhi Kim
Taeksoo Kim
Grace Lee
Jinok Lee
Joshua Lee
Sharon Lee
Sooil Lee
Sunghoon Lee
Yaesol Lee
Leah Leem
Kristine Leung
Samei Lim
Miriwa
Jihyun Na
Jung Mi Nah
JungMi Nam
Younju Namkoong
Brigitte Noh
Suok Noh
NY WOORI CHURCH
Cecilia Park
Jin Park
Kyong Park
Janine-Marie Rafia
Elizabeth Roh
Jungwon Shin
Youhjung Son
Hannah Song
Jong Won Yom
Daeil Yang
Typer Yom
Hye Yong Yoo
Hyesuk Yoon
Hasung Yu
Xinyi Zhang

EVENTS/OUTREACH VOLUNTEERS

Sarah Bowling
Adam Chan
Kristen Chan
Eboni Chase
Jaime Cho
Jenny Choi
Lana Foord
Xi Guo
Jessie Hong
Cindy Huynh
Cara Jo
Jeni Jo
Stephen Jo
Shati Khan
Amanda Kim
Hye Rim Kim
Hyeri Kim
Chieri Kina
Maria King
Cindy Kui
Jenny Lee
Sangbin Lee

Soo Yeoun Lee
Estella Li
Youkyung Lo
Kenny Montilla
Neil Park
Janine Rafio
Agnieszka Rybak
Erika Shin
Jenny Song
Jessica Sung
Julia Wong
Michelle Yang
Sang Kook Yeom
Wonji Yi

SHELTER SERVICES - RAINBOW HOUSE

Eunsook Bang, MD
Meeja Bang
Staver Chang
Steven Chang
Yeonhee Cho
JinAh Choi
Jinwoo Chu
Sua Ha
Hyejin Han
John Han
Martha Hong
Eulhyang Hyun
Ilryun Im
Grace Ji
Hyunsook Ju
Jae Heun Jung
Soonyoung Jung
Amanda Kim
Ashley Kang
Eliot Kang
Jennifer Kang
Jessica Kang
Jungsook Jang
Dohyung Kim
Eunsook Kim
Gukhee Kim
Hyunhee Kim
Keumja Kim
Kimin Kim
Kum Ock Kim
Mijung Kim
Namhi Kim
Taeksoo Kim
Grace Lee
Jinok Lee
Joshua Lee
Sharon Lee
Sooil Lee
Sunghoon Lee
Yaesol Lee
Leah Leem
Kristine Leung
Samei Lim
Miriwa
Jihyun Na
Jung Mi Nah
JungMi Nam
Younju Namkoong
Brigitte Noh
Suok Noh
NY WOORI CHURCH
Cecilia Park
Jin Park
Kyong Park
Janine-Marie Rafia
Elizabeth Roh
Jungwon Shin
Youhjung Son
Hannah Song
Jong Won Yom
Daeil Yang
Typer Yom
Hye Yong Yoo
Hyesuk Yoon
Hasung Yu
Xinyi Zhang

UNNI-HYUNG MENTORING PROGRAM

Christopher Bae
Dianne Choie
Jesse Fischer
Han Ko
Patrick Moon

YCPT & KNOWLEDGE NETWORK

Kenneth An
Eunice Baik
Rebecca Chang
Sherry Chen
Crystal Chiang
Lanny Cho
Seung Hyun Cho
Abraham Choi
Bo Young Choi
Grace Choi
Injee Choi
Ju Yeong Choi
Judy Choi
Christie Chung
Elizabeth Hwang
Jung Yun Jang
Min Jang
Sohee Jane Jang
Tyson Jang
Yun Seong Ji
Hyun Jung
Dong Hun Kang
Esther Kang
Haena Kang
Hyun Min Kang
Andrew Kim
Bryant Kim
Casey Kim
Heewon Kim
Jiwon Kim
Judy Kim
Kahyun Kay Kim
Khang Kim
Kyukyung Kim
Rebecca Kim
Regina Kim
Roy Kim
Shion Kim
Willfree Kim
Young Kim
Tae Kyung Kong
Samuel Kwon
Suji Kwon
Haizhen Lee
James Lee
Jieun Lee
Joshua Lee
Joyce Lee
Matthew Lee
Paul Lee
Rachel Lee
Sara Moon
Yeon Joo Oh
Joseph Om
Simon Om
Faith Pak
Jean Park
Robin Park
Bob Piao
Jae Woo James Seong
Minyoung Shin
Chris Song
Paul Yang
Soo Hwan Yang
Christina Yannello
Ellen Yi
Sunabi Yi
Suhyun Yun

HODORI AFTERSCHOOL PROGRAM

Aarushi Agarwal
Brian Chen
Jeremi Chimbo

Jasmine Deloatch
Michale Giron
Uganda Gray
Sua Ha
Soo Hyun Jung
Helena Jiang
Sung Jin (Jason) Park
Hyun Ju Ji
Jessica Jung
Sarah Kang
Julianne Keller
Jenny Kim
Regina Kim
Yoola Kim
Grace Mahony
Moses Oh
Akshay Pardiwala
Elle Park
Avery Pusey
Christine Suh
Heeju Sun
Yunju Sun
Joyce Tlan
Michelle Tsang
Angela Tsao
Victoria Winner
Wendy Xie
Isaac Ye
Megan Yip
Typher Yom
Mirra Yu
MURANG
Kunwoo Chung
Jicheol Ha
Andrew Hong
Matthew Hong
Enna Lee
Janet Lee
Hyunjee Min
Dahyun (Elle) Park
Noel Pi
John Skiera
Sung Hoon Yoon

PHOTOGRAPHER/ VIDEOGRAPHER

Don Hwang
Mihyun Kang
Edward Kim
Corky Lee
Shao Han Lee
Hassan Mokkadam
Jeenah Moon

GRAPHIC DESIGNER

Jennifer Weinberg

TRANSPORTATION

Lillian Cho
Orlo Ellison
Jungsook Kang
Yonghui Kim
Min Ho Ko
Chihyon Na
Sung Rah
Hye Sook Yoon

TRANSLATION

Kwang E. Kim
Diana Lee
June Moon
Jee Young Rebecca Park
Ji Yoon Yoon

PR/MARKETING/EDITORS

Vicki Chan
Cynthia Park

ADVISORY COUNCIL

Hali Lee, MSW
Founder, Asian Women Giving Circle

Hilary Sunghee Seo, Esq.
Counsel, Davis Polk & Waldwell, LLP

Jong Uk Hong, CPA
Partner, Samwoo LLP

Kyun Yi
Managing Partner, De Martini & Yi, LLP

Shinhee Han, LCSW, PhD
Psychotherapist & Adjunct Professor, Columbia University

FOUNDER

Kwanghee Kim

ASSOCIATE BOARD

Young Yim, Chair
Strategy and Analytics Manager, Phreesia

Aaron Na
Associate Engineer, Con Edison

Bola Sim
Tax Associate, BDO USA LLP

Derek Ahn
Associate, WnW Capital

Hyun Sean Kim
Associate, Sidley Austin LLP

Jeannie Kim
PhD candidate, New York University

Jessica Ji-Young Baek
Associate, Nomura Securities, Int'l.

Katherine Cho
*Program Manager, the Colin Powell School for Civic and Global Leadership
The City College of New York / M.A. Candidate at Teachers College, Columbia*

Monica Eunsun Hyun
Engineer, Harris Corporation

Patrick Moon
Senior Associate, Sigma Capital Partners

Samuel Cho
QA Consultant at Bloomberg LP

Sara S. Kim
Production Coordinator, Global Brands Group

Sylvia Lee
Product Designer, NASDAQ

William Kang
HR Manager, Joongang Ilbo

EXECUTIVE DIRECTOR

Bomsinae Kim

STAFF

Lydia Baek
Youth Program Coordinator & Advocate

Jeremi Chimbo
Hodori Teacher Assistant

Jinna Choi
Hodori Teacher

Susan Choi, MFT
Counselor

Young Sook Choi
SCSEP Receptionist

Katherine Colindres
Hodori Teacher Assistant

Miriell Conde
Hodori Teacher Assistant

Janell Dwyer
Hodori Teacher Assistant

Cristina Enriquez
Civic Corps Program Associate

Shatima Franklin
Hodori Teacher Assistant

Matthew Cotto Frias
Hodori Taekwondo Activity Specialist

Chriscely Garcia
Hodori Teacher Assistant

Marta Hausman
Hodori Fencing Activity Specialist

Charles Huang
Civic Corps Outreach Associate

Yi-Ching Huang
Hodori Social Work Intern

Susanna Im
Hodori Teacher

Anna Jackson
Hodori Teacher

Yang Ji
Hodori Teacher

Christine Joo
Self-Sufficiency Coordinator

Seo Hyun Jung
Hodori Teacher

Caroline Kang
Events & Communications Coordinator

Young Hae Kang, LCSW
Counselor

Chieon Kim, LMSW
T-Housing Social Worker

Eunkyoung Kim
Director of Shelter Services

Jenny Kim, MHC
Counselor

Ji Ye Kim, MSW
Community Outreach & Education Coordinator

Saenam Kim
Director of Programs and Administration

Sue Kim
Shelter Social Worker

Yon Hee Kwon
Hodori Teacher

Jasmine Lee
Hodori Cooking Activity Specialist

Ji Yae Lee
Hodori Teacher

Joy Hee Lee, LMSW
Director of Clinical Services

Shao Han Lee
Finance & Operations Manager

Songhee Lee
Hodori Korean Drumming Activity Specialist

Sung Min Lee
Hodori Theater Activity Specialist

June Moon
SCSEP Receptionist

Hyeryung Na
Hodori Teacher

Younghoon Oh
Hodori K-pop Activity Specialist

Tenzin Palkey
Hodori Teacher Assistant

Cecilia Park
SCSEP Shelter Kitchen Manager

Cheryl Riley
Hodori Education Specialist

Ying Ren
Hodori Teacher Assistant

Chanel Roberts
Hodori Teacher Assistant

Nicolle Semenova
Hodori Teacher Assistant

Hoo Fat Sham
SCSEP Janitorial Assistant

Heidi Song M. Shin
Shelter Manager (night shift)

Jamie Smith
Hodori Teacher Assistant

Albert Song
Hodori Teacher Assistant

Paola Vega
Hodori Teacher Assistant

Patsy Vega
Hodori Teacher

Huangshu Xu
Hodori Social Work Intern

Jungsook "Grace" Yoon
Grant Officer

Mi Jung You, LMHC
Director of Hodori Program